



BAXLEY
— FAMILY FARMS, LLC —



Adam Moss



ANNUAL PRODUCTION SALE

Saturday, January 11, 2025 • 12:30PM EST

Welcome

2024 What a Year!

In late Fall of 2023, a tornado hit our farm — trees down, the farm shop damaged, and the greenhouses completely demolished. We found parts of buildings and farm supplies up to one half of a mile away. Needless to say, we worked well into 2024 to repair, rebuild and clean up.

Then we had historic weather in the form of a drought and TS systems throughout the spring and summer. At times we were simply in survival mode. Despite these conditions, our cow herd did an awesome job!

Many people ask about our location and it does seem to be a favorite spot for hurricanes and tropical storms, BUT we realize this is a part of life and we wouldn't live anywhere else.

We thank God for giving us the strength to persevere. We feel thankful and blessed.

We pray for all folks impacted by severe weather conditions. May God bless you and give you and yours the strength to carry on.

Baxley Family Farms

SALE SCHEDULE

Friday, January 10, 2025

8:00 AM – Until

Sale cattle available for viewing

6:30 PM

We will host the Pee Dee Cattlemans Association meeting at the cow barn. A guest speaker will share information about EPDs. A "smash burger" bar will be open for your dining enjoyment. Please join us if you are a member of the association, a potential member, or a potential customer from out of town. We look forward to seeing you on the farm.

Saturday, January 11, 2025

8:00 AM

Sale cattle available for viewing

11:30 AM

Lunch will be served

12:30 PM

Sale Time



TERMS AND CONDITIONS

- Terms of the sale are cash or check. Every animal will be sold to the highest bidder.
- Any changes will be announced on sale day and will take precedence over printed material in the sale book.
- All cattle are the buyer's property as soon as sold and will be cared for, for a reasonable length of time.
- Baxley Family Farms will retain 1/3 semen revenue interest in all bulls. The buyer will get possession and 100% of the salvage value.
- Any person attending the sale does so at their own risk. Neither the owners, sale management, nor any person connected with this sale, assumes any liability.

SALE LOCATION

BAXLEY FAMILY FARMS CATTLE BARN
1129 Altman Avenue, Georgetown, SC 29440

SALE INFORMATION

SALE MANAGER:

Zach Moffitt - 336.736.6340
Zach Moffitt Cattle Marketing



AUCTIONEER:

Darren Carter - 864.980.5695

RINGMEN:

Will Thompson - 704.616.8553
Neil Bowman - 919.270.7094

SALE DAY CONTACTS:

Lloyd Baxley: 843.325.8821
Zach Moffitt: 336.736.6340
Connie Baxley: 843.325.6146
Joshua Baxley: 843.325.6145
Jesse Baxley: 843.325.3525



LIVESTOCK REPRESENTATIVES:

Travis Mitchell: 803.609.2828
Executive Director, South Carolina Cattlemans Association
Lee VanVlake: 843.344.3322
Area Livestock and Forages Agent
Henry Mitchell: 803.627.6142
Premier Select Sires Area Sales Manager (SC/NC)

TRANSPORTATION

- \$75 credit for bull pickup on sale day
- Transportation of purchased animals will be available.
- SC Delivery: Free of charge
- NC/GA: \$100/animal if customer spends <\$5,000
- Free if customer spends >\$5,000

UPDATES

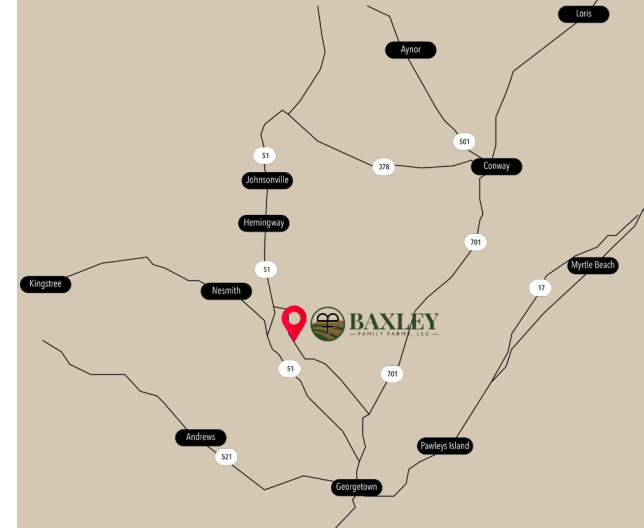
Please visit our website and social channels to view additional information and updates.
www.BaxleyFamilyFarms.com
Facebook.com/BaxleyFamilyFarms

ACCOMMODATIONS IN GEORGETOWN

The George | 843.932.8664
Hampton Inn | 843.545.5000
Quality Inn & Suites | 843.546.5656

A New Boutique Waterfront Hotel in Georgetown

In Georgetown's historic district, along its storied waterfront, The George connects the world to its magical waterways and sea islands – and the gifts of life along the water. In beautifully whimsical spaces, the town's first boutique hotel mirrors and moves like the water itself—inviting, inspiring, sparkling, and surprising—in ways infinite and enduring.



DIRECTIONS

FROM HEMINGWAY:

Travel down 41 South
Turn left on Highway 512, traveling approximately 5 miles
Turn left on Altman Avenue

FROM ANDREWS:

Travel toward Hemingway on SC 41
Turn right on Highway 513
Turn Right on Rose Hill Road, traveling approximately 4.3 miles
Turn left on Altman Avenue

FROM KINGSTREE:

Travel toward Hemingway on Highway 261
Turn right on Highway 512
Cross SC 41-51 and Highway 513, traveling approximately 5 miles
Turn left on Altman Avenue

FROM CONWAY:

Travel toward Georgetown on Highway 701
Turn right on Highway 261 and left on Carvers Bay Road
Cross Choppee Road and continue to stop sign on Rose Hill Road
Turn right, traveling approximately 1.2 miles
Turn right on Altman Avenue

SIRE GROUP //
BXFM GAUCHO H4

BXFM Gaucho H4, bred and raised here at Baxley Family Farms, has proven himself where it really counts — out in the pasture. For two years he has done live cover on cows that were run through the AI process first — no hand picked or flush cows. He has built his reputation the hard way. We have AI bred cows in excess of 35 years and have used many top end bulls. Gaucho has my full confidence in his reproductive abilities. His daughters will start production in our herd next year.



♀ LOT #1

BXFM G1 GAUCHO L91

Black (Homozygous Black)
Polled (Homozygous Polled)

ASA#: 4367006 Tattoo: L91
DOB: 2023-11-15 5/8 SM 3/8 AN

HOOK'S BEACON 56B

BXFM GAUCHO H4
BXFM F75

HOOK'S EAGLE 6E

BXFM BELLE G1
BF T 1288 BELLE E1

Birth Actual	Adj. Weaning	Adj. Yearling
88	770	1402

IMF	REA
2.66	17.23



	CE	Brth	Wean	Year	ADG	MCE	Milk	MWW	Stay	Doc	CW	YG	Marb	BF	REA	SF	API	TI
EPD	12.9	2.0	105.8	167.9	0.39	6.8	22.0	75.5	14.5	14.7	58.9	-0.25	0.51	-0.023	1.24	-0.3	150.1	100.0
PC	±4.5	±1.6	±9.1	±13.9	±0.02	±6.3	±10.1	±9.2	±4.8	±3.0	±11.8	±0.14	±0.16	±0.027	±0.28			
%	50	85	1	1	2	55	70	5	55	25	4	45	30	70	1		25	3

BXFM Gaucho H4 has done it again! Lot #1 is a 3/4 brother to BXFM Stoney Run K15, our high selling bull at the 2024 Annual Production Sale. This bull has tremendous potential and has gained much interest. He will surely be a hard one to let go!

♀ LOT #2

BXFM J83A GAUCHO L18

Black (Homozygous Black)
Polled (Homozygous Polled)

ASA#: 4366935 Tattoo: L18
DOB: 2022-10-29 5/8 SM 3/8 AN

HOOK'S BEACON 56B

BXFM GAUCHO H4
BXFM F75

TJ STONE COLD 336G

BXFM SALLY J83A
BXFM SALLY G119

Birth Actual	Adj. Weaning	Adj. Yearling
67	738	1391

IMF	REA
2.49	15.35



	CE	Brth	Wean	Year	ADG	MCE	Milk	MWW	Stay	Doc	CW	YG	Marb	BF	REA	SF	API	TI
EPD	13.1	-0.3	95.4	157.5	0.39	9.1	29.3	76.9	17.5	13.7	70.0	-0.19	0.48	-0.011	1.29	-0.31	155.5	96.6
PC	±4.4	±1.6	±9.1	±14.1	±0.02	±6.2	±10.4	±9.2	±4.9	±3.0	±12.2	±0.14	±0.17	±0.027	±0.28			
%	45	45	4	2	2	20	15	3	20	35	1	60	35	85	1		20	10

Lot #2 will definitely be a sale favorite — lots of chrome! This bull is the top 1% in REA EPDs.

♀ LOT #3

BXFM G39 GAUCHO L102
Black (Homozygous Black)
Polled (Homozygous Polled)

ASA#: 4366928 Tattoo: L102
DOB: 2023-11-23 5/8 SM 3/8 AN

HOOK'S BEACON 56B

BXFM GAUCHO H4
BXFM F75

Birth Actual	Adj. Weaning	Adj. Yearling
72	670	1267

IMF	REA
3.03	14.65

GIBBS 6155D SUPER DUTY

BXFM EVERELDA G39
BXFM D33

	CE	Brth	Wean	Year	ADG	MCE	Milk	MWW	Stay
EPD	14.7	-3.0	71.2	110.5	0.25	9.5	26.5	62.0	19.2
PC	±4.5	±1.6	±9.3	±14.1	±0.02	±6.3	±10.4	±9.3	±5.0
%	30	10	70	65	60	15	30	50	10

	Doc	CW	YG	Marb	BF	REA	SF	API	TI
EPD	13.3	36.8	-0.15	0.72	0.007	0.88	-0.3	167.3	90.3
PC	±3.0	±12.2	±0.14	±0.16	±0.027	±0.28			
%	40	40	75	10	95	20		10	20



Birth Actual	Adj. Weaning	Adj. Yearling
67	723	1390

IMF	REA
3.16	14.88

HOOK'S BEACON 56B

BXFM GAUCHO H4
BXFM F75

CCR COWBOY CUT 5048Z

BXFM G54
BXFM A4

	CE	Brth	Wean	Year	ADG	MCE	Milk	MWW	Stay	Doc	CW	YG	Marb	BF	REA	SF	API	TI
EPD	12.1	0.3	91.7	144.6	0.33	7.9	24.9	70.7	20.3	15.5	47.4	-0.26	0.54	-0.049	0.92	-0.4	171.5	98.9
PC	±4.4	±1.5	±8.8	±13.6	±0.01	±6.1	±9.9	±9.0	±4.8	±3.0	±12.0	±0.14	±0.16	±0.027	±0.28			
%	45	35	10	10	10	20	35	15	10	15	10	95	10	95	40		5	5

Lot #4 is a Purebred Simmental with lots of chrome. He is the top 5% in API and TI.

♀ LOT #5

BXFM G50 GAUCHO L101
Black (Homozygous Black)
Polled (Homozygous Polled)

ASA#: 4366927 Tattoo: L101
DOB: 2023-11-22 5/8 SM 5/16 AN 1/16 CS

HOOK'S BEACON 56B

BXFM GAUCHO H4
BXFM F75

Birth Actual	Adj. Weaning	Adj. Yearling
70	679	1175

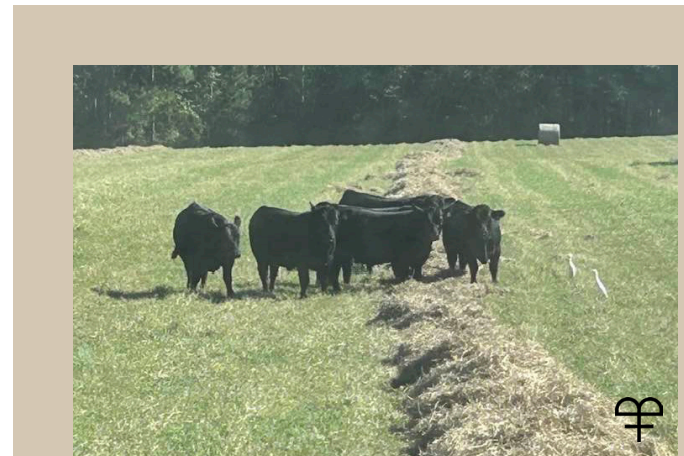
IMF	REA
2.04	13.54

TJ MAIN EVENT 503B

BXFM G50
BXFM A78

	CE	Brth	Wean	Year	ADG	MCE	Milk	MWW	Stay
EPD	18.4	-3.7	79.9	111.7	0.2	10.5	26.5	66.4	17.9
PC	±4.4	±1.6	±9.0	±13.9	±0.02	±6.2	±10.1	±9.1	±4.8
%	5	10	35	65	90	10	30	30	20

	Doc	CW	YG	Marb	BF	REA	SF	API	TI
EPD	11.2	27.1	-0.21	0.41	-0.02	0.73	-0.3	155.1	88.5
PC	±3.0	±12.0	±0.14	±0.16	±0.026	±0.28			
%	70	70	55	45	85	45		20	25



We ran the bulls since weaning on Tifton 85 while being limit fed on our high fiber bull ration. We don't push them hard but they look good and have stayed sound! Cully and Lloyd were baling and raking the excess forage and these bulls were approving the deal!

**SIRE GROUP //
KBHR GLOBAL J138**

KBHR Global J138 and KBHR Bold Ruler H152 are full brothers. We have used both sires in our breeding program. There are some minor differences in offspring but we have been extremely pleased with both bulls. Their dam, BAR CK MS X38 106Z is very special.



♀ LOT #6

BXFM E9 GLOBAL L20
Black (*Homozygous Black*)
Polled (*Homozygous Polled*)

ASA#: 4367007 Tattoo: L20
DOB: 2023-10-29 1/2 SM 1/2 AN

WS PROCLAMATION E202
KBHR GLOBAL J138
BAR CK MS X38 106Z

BASIN PAYWEIGHT 1682
BF T1312 SATIN LADY E9
CALLAWAYS PRIDE 1312

Birth Actual	Adj. Weaning	Adj. Yearling
64	639	1189

IMF	REA
1.71	13.95



	CE	Brth	Wean	Year	ADG	MCE	Milk	MWW	Stay	Doc	CW	YG	Marb	BF	REA	SF	API	TI
EPD	17.8	-3.4	68.5	111.7	0.27	11.3	27.7	61.9	19.2	15.3	35.3	0.02	0.73	0.003	0.31		171.5	89.4
PC	±4.3	±1.6	±8.8	±13.6	±0.01	±6.1	±9.9	±8.8	±4.8	±2.9	±11.8	±0.13	±0.16	±0.025	±0.27			
%	10	10	80	65	50	4	20	50	10	20	45	99	10	95	99		5	25

Lot #6 is full blood brother to Lot #7 and Lot #52A and Lot #52B, two heifers in the Pick of the Elite Donor Prospects sired by Global. The dams of all four animals are flush sisters. Check out the EPDs for calving ease, marbling and he is in the top 5% in API.

♀ LOT #7

BXFM E3 GLOBAL L21
Black (*Homozygous Black*)
Polled (*Homozygous Polled*)

ASA#: 4367034 Tattoo: L21
DOB: 2023-10-29 1/2 SM 1/2 AN

WS PROCLAMATION E202
KBHR GLOBAL J138
BAR CK MS X38 106Z

BASIN PAYWEIGHT 1682
BF T1312 SATIN LADY E3
CALLAWAYS PRIDE 1312

Birth Actual	Adj. Weaning	Adj. Yearling
62	644	1254

IMF	REA
3.09	14.65



	CE	Brth	Wean	Year	ADG	MCE	Milk	MWW	Stay	Doc	CW	YG	Marb	BF	REA	SF	API	TI
EPD	17.8	-3.3	76.4	123.5	0.29	11.5	26.4	64.5	16.7	15.2	36.6	-0.02	0.75	-0.002	0.4		170.5	94.4
PC	±4.3	±1.6	±8.6	±13.6	±0.01	±6.1	±10.0	±9.0	±4.8	±2.9	±11.8	±0.14	±0.16	±0.026	±0.27			
%	10	10	50	40	35	3	30	40	30	20	40	95	10	90	95		5	10

Lot #7 is full blood brother to Lot #6 and Lot #52A and Lot #52B, two heifers in the Pick of the Elite Donor Prospects sired by Global. The dams of all four animals are flush sisters. This bull is in the top 10% for calving ease, the top 5% for API and top 10% for TI. He and Lot #6 should produce superior maternal SimAngus cows.

LOT #8

BXFM E11 GLOBAL L28
Black (*Homozygous Black*)
Polled (*Homozygous Polled*)

ASA#: 4366988 Tattoo: L28
DOB: 2023-11-2 1/2 SM 1/2 AN

WS PROCLAMATION E202
KBHR GLOBAL J138
BAR CK MS X38 106Z

K C F BENNETT FORTRESS
BF X1204 EVERELDA E11
BF Z16

Birth Actual	Adj. Weaning	Adj. Yearling
78	639	1416

IMF	REA
2.63	12.72



	CE	Brth	Wean	Year	ADG	MCE	Milk	MWW	Stay	Doc	CW	YG	Marb	BF	REA	SF	API	TI
EPD	16.5	-2.5	84.1	144.6	0.38	10.1	23.2	65.2	19.0	16.2	49.3	0.03	0.72	-0.014	0.33		175.1	97.4
PC	±4.4	±1.5	±8.6	±13.6	±0.01	±6.1	±9.9	±8.8	±4.9	±2.9	±11.6	±0.14	±0.16	±0.026	±0.26			
%	15	15	25	10	3	10	60	35	10	15	15	99	10	85	95		4	5

Lot #8 is the type of bull you look to produce when KBHR Global J138 is bred to an AAA herd. This bull's dam, BF X1204 Everelda E11 is a very fancy KCF Bennett Fortress daughter. L28 is in the top 4% for API and top 5% for TI.

LOT #9

BXFM F75 GLOBAL L45
Black (*Homozygous Black*)
Polled (*Homozygous Polled*)

ASA#: 4367000 Tattoo: L45
DOB: 2023-11-3 3/4 SM 1/4 AN

WS PROCLAMATION E202
KBHR GLOBAL J138
BAR CK MS X38 106Z

HOOK'S BROADWAY 11B
BXFM F75
HHCC LUCY 1264 749 1554

Birth Actual	Adj. Weaning	Adj. Yearling
80	590	1202

IMF	REA
2.22	16.03



	CE	Brth	Wean	Year	ADG	MCE	Milk	MWW	Stay	Doc	CW	YG	Marb	BF	REA	SF	API	TI
EPD	12.7	-0.2	70.6	114.8	0.28	7.8	22.8	58.0	23.3	13.3	20.3	-0.23	0.45	-0.03	0.62	-0.27	153.8	79.8
PC	±4.2	±1.5	±8.6	±13.4	±0.01	±6.1	±9.9	±8.8	±4.8	±2.9	±11.6	±0.13	±0.16	±0.026	±0.27			
%	50	45	70	55	40	35	60	70	1	40	90	50	40	70	65		20	55

♀ LOT #10

BXFM C73 GLOBAL L64
Black (*Homozygous Black*)
Polled (*Homozygous Polled*)

ASA#: 4367017 Tattoo: L64
DOB: 2023-11-5 3/4 SM 1/4 AN

WS PROCLAMATION E202
KBHR GLOBAL J138
BAR CK MS X38 106Z

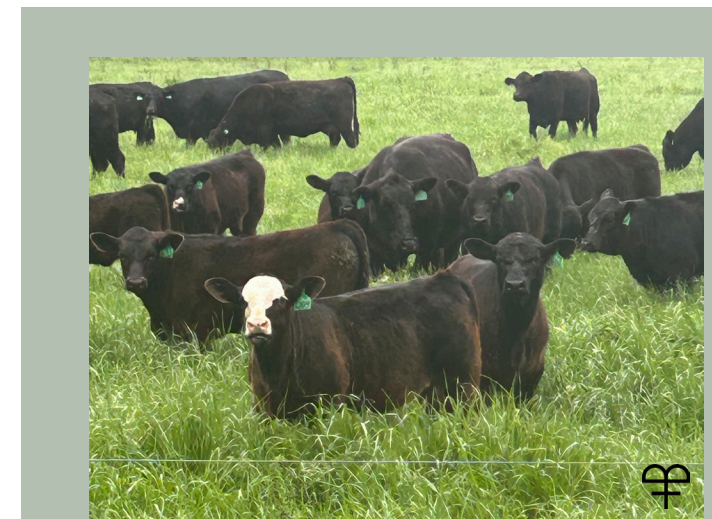
HOOVER DAM
BXFM C73
GIBBS 0632X MABELLE N318

Birth Actual	Adj. Weaning	Adj. Yearling
81	609	1162

IMF	REA
2.60	13.06

	CE	Brth	Wean	Year	ADG	MCE	Milk	MWW	Stay
EPD	15.2	-0.3	74.5	122.6	0.3	8.9	24.3	61.1	20.6
PC	±4.2	±1.5	±8.5	±13.4	±0.01	±6.1	±9.8	±8.8	±4.8
%	25	45	55	40	30	20	50	55	3

	Doc	CW	YG	Marb	BF	REA	SF	API	TI
EPD	16.5	27.7	-0.15	0.62	-0.039	0.4	-0.34	162.8	86.8
PC	±2.8	±11.4	±0.13	±0.16	±0.026	±0.26			
%	10	70	75	20	55	95		10	30



Rye grass in late April. The work horse on our farm!

SIM ANGUS BULLS

♀ LOT #11

BXFM 1627 GLOBAL L13
 Black (Homozygous Black)
 Polled (Homozygous Polled)
 ASA#: 4366998 Tattoo: L13
 DOB: 2023-10-23 1/2 SM 1/2 AN

Birth Actual	Adj. Weaning	Adj. Yearling
79	609	1241
IMF		REA
2.15		12.96



WS PROCLAMATION E202
KBHR GLOBAL J138
 BAR CK MS X38 106Z

CONNEALY COUNSELOR
HH LUCY 060L 1554 1627
 HHCC LUCY 1264 749 1554

	CE	Brth	Wean	Year	ADG	MCE	Milk	MWW	Stay	Doc	CW	YG	Marb	BF	REA	SF	API	TI
EPD	12.0	-1.8	69.6	113.3	0.27	5.0	26.6	61.7	20.2	14.5	32.5	0.06	0.49	0.007	0.17		150.1	81.1
PC	±4.4	±1.6	±8.8	±13.6	±0.01	±6.2	±9.9	±9.0	±5.0	±2.9	±11.6	±0.14	±0.16	±0.026	±0.27			
%	60	20	75	60	50	80	30	55	4	25	55	99	30	95	99		25	50

SIM ANGUS BULLS

**SIRE GROUP //
 CLRS HOMELAND 327H**

Homeland's offspring are very eye appealing cattle — easy to point out in the pasture. Most of Homeland's heifers will remain on the farm, but we are offering a few in this sale.



Nutrien
Ag Solutions™

Hemingway, SC - 843-558-3512

Manager: Jamey Abrams - (843) 372-9478
 Warehouse Manager: Joey Barnhill
 Administrative Coord: Aaron Owens

Kingstree, SC - 843-382-3661

Manager: Jamie Brown - (843) 687-2498
 Salesman: Austin Pollard - (843) 372-2453
 Salesman: Jay Morris - (843) 372-9273
 Operations Manager: Lee Moore (843) 401-8091



RADIATE contains two different plant growth regulators (PGRs) - IBA and kinetin - that synergistically stimulate early and improved root development. In addition, RADIATE contains a mixture of vitamins that aid in successful transplanting and plant growth.

We are with you from start to finish. From soil sampling and custom application to providing for your crop protection needs.

DYNAGRO
SEED



Dyna-Gro helps farmers select the perfect crop seed for their growing conditions. You get local recommendations for your area, with advice you can trust. Dyna-Gro offers corn, soybeans, wheat and more.

"If You Ate Today, Thank a Farmer"

LOT #12 ♀

BXFM E49 HOMELAND L63
 Black (Homozygous Black)
 Polled (Homozygous Polled)

ASA#: 4367016 Tattoo: L63
 DOB: 2023-11-5 1/2 SM 1/2 AN

REDHILL 672X X004 231A
CLRS HOMELAND 327H
 CLRS ALWAYS XCELLENT

K C F BENNETT FORTRESS
BXFM E49
 BXFM C84

Birth Actual	Adj. Weaning	Adj. Yearling
75	626	1230
IMF		REA
1.72		15.36



	CE	Brth	Wean	Year	ADG	MCE	Milk	MWW	Stay	Doc	CW	YG	Marb	BF	REA	SF	API	TI
EPD	14.5	-2.3	74.3	123.3	0.31	9.2	24.5	61.6	22.5	8.3	25.7	-0.25	0.34	-0.034	0.74		154.6	82.6
PC	±4.3	±1.5	±8.6	±13.4	±0.01	±5.9	±9.6	±8.7	±4.9	±2.8	±11.6	±0.14	±0.16	±0.026	±0.27			
%	30	15	55	40	25	20	45	55	1	90	75	45	55	55	40		20	45

LOT #13 ♀

BXFM F19 HOMELAND L33
 Black (Homozygous Black)
 Polled (Homozygous Polled)

ASA#: 4366976 Tattoo: L33
 DOB: 2023-11-2 5/8 SM 3/8 AN

REDHILL 672X X004 231A
CLRS HOMELAND 327H
 CLRS ALWAYS XCELLENT

CCR COWBOY CUT 5048Z
BXFM F19
 BF Z11

Birth Actual	Adj. Weaning	Adj. Yearling
80	584	1207
IMF		REA
2.58		15.12



	CE	Brth	Wean	Year	ADG	MCE	Milk	MWW	Stay	Doc	CW	YG	Marb	BF	REA	SF	API	TI
EPD	10.5	1.1	81.1	121.4	0.25	7.0	24.5	65.1	16.1	12.5	29.9	-0.32	0.57	-0.046	0.9	-0.38	144.3	87.3
PC	±4.3	±1.5	±8.6	±13.4	±0.01	±5.9	±9.6	±8.7	±4.8	±2.8	±11.4	±0.13	±0.16	±0.025	±0.26			
%	80	70	30	45	60	50	45	35	35	50	60	25	25	45	20		35	30

Cowboy Cut daughters continue to do a fantastic job here at the farm. This Homeland cross with a Cowboy Cut daughter has produced a bull with a fancy front end. His phenotype is very eye appealing.

LOT #14

BXFM A68 HOMELAND L83

Black (Homozygous Black)

Polled (Homozygous Polled)

ASA#: 4367047

Tattoo: L83

DOB: 2023-11-13

1/2 SM 3/8 AN 1/8 CS

REDHILL 672X X004 231A

GIBBS 0612X HY BET 4P05

CLRS HOMELAND 327H

BXFM A68

CLRS ALWAYS XCELLENT

U17

Birth Actual	Adj. Weaning	Adj. Yearling
72	606	1285

IMF	REA
2.82	14.79



	CE	Brth	Wean	Year	ADG	MCE	Milk	MWW	Stay	Doc	CW	YG	Marb	BF	REA	SF	API	TI
EPD	14.3	-3.1	68.8	112.9	0.28	9.1	24.3	58.6	19.7	8.9	24.1	-0.3	0.49	-0.042	0.82	-0.3	156.6	84.1
PC	±4.4	±1.5	±8.8	±13.6	±0.01	±6.1	±9.8	±8.7	±5.0	±2.9	±12.0	±0.14	±0.16	±0.026	±0.27			
%	30	10	75	60	40	20	50	70	10	90	80	30	30	45	30		15	40



**SIRE GROUP //
LCDR RESERVE 210J**

In the search for outcross Simmental genetics, LCDR Reserve 210J was a fairly obvious choice. As you can see, he has done a fine job here. This nice bald face on most of his calves is an absolute plus.



Birth Actual	Adj. Weaning	Adj. Yearling
75	635	1119

IMF	REA
1.68	14.49

HHS MR ENTOURAGE 867B
LCDR RESERVE 210J

LCDR MS ECHO 43E

LOT #15

BXFM E55 RESERVE L84

Black (Homozygous Black)

Polled (Homozygous Polled)

ASA#: 4367009

Tattoo: L84

DOB: 2023-11-13

PB SM

HHS MR ENTOURAGE 867B

GIBBS 2654Z BULLET PROOF

LCDR RESERVE 210J

BXFM E55

LCDR MS ECHO 43E

BXFM Y25

	CE	Brth	Wean	Year	ADG	MCE	Milk	MWW	Stay	Doc	CW	YG	Marb	BF	REA	SF	API	TI
EPD	12.6	-0.3	80.3	116.5	0.23	7.9	19.8	59.8	22.8	15.3	15.7	-0.36	0.29	-0.069	0.66	-0.32	158.3	85.8
PC	±4.3	±1.5	±8.5	±13.1	±0.01	±6.1	±9.9	±8.7	±4.8	±2.8	±11.8	±0.14	±0.16	±0.026	±0.26	±		
%	35	25	40	50	65	20	80	60	1	15	90	65	30	70	90		15	30

LOT #16

BXFM D16 RESERVE L86

Black (Homozygous Black)

Polled (Homozygous Polled)

ASA#: 4367040

Tattoo: L86

DOB: 2023-11-13

PB SM

HHS MR ENTOURAGE 867B

CLRS AFTER SHOCK 604 A

LCDR RESERVE 210J

BXFM D16

LCDR MS ECHO 43E

BXFM Y25

Birth Actual	Adj. Weaning	Adj. Yearling
98	666	1320

IMF	REA
1.84	13.79

	CE	Brth	Wean	Year	ADG	MCE	Milk	MWW	Stay
EPD	8.0	2.7	90.0	129.7	0.25	4.2	21.3	66.2	14.6
PC	±4.2	±1.5	±8.5	±13.1	±0.01	±6.1	±9.8	±8.8	±4.8
%	90	80	15	25	50	80	65	35	65

	Doc	CW	YG	Marb	BF	REA	SF	API	TI
EPD	12.6	42.4	-0.34	0.33	-0.073	0.93	-0.34	136.0	88.1
PC	±2.8	±11.6	±0.14	±0.16	±0.026	±0.27			
%	40	15	75	25	50	40		45	25

We need to duplicate this bull over and over again. This bull's dam, BXFM D16, makes you fully appreciate him. She is the dam of a first calf heifer sired by Highlife that caught Henry Mitchell's eye early on. She is also the granddam of BXFM J28 Honor L4.



LOANS FOR:

- Operating expenses
- Livestock
- Large and small tracts of land
- Barns, outbuildings, fences
- Equipment and machinery
- Home purchase and construction

CLAY WARD

cward@arborone.com

843.307.5910



NMLS# 561483



ARBORONE
FARM CREDIT

♀ LOT #17

BXFM E76 RESERVE L88

Black (Homozygous Black)

Polled (Homozygous Polled)

ASA#: 4367023 Tattoo: L88
DOB: 2023-11-15 PB SM

HHS MR ENTOURAGE 867B

LCDR RESERVE 210J

LCDR MS ECHO 43E

GIBBS 2654Z BULLET PROOF

BXFM E76

BXFM Y62

Birth Actual	Adj. Weaning	Adj. Yearling
86	708	1240

IMF	REA
2.06	14.13



	CE	Brth	Wean	Year	ADG	MCE	Milk	MWW	Stay	Doc	CW	YG	Marb	BF	REA	SF	API	TI
EPD	9.1	1.5	87.3	141.1	0.34	5.6	21.1	64.8	14.5	14.4	20.2	-0.32	0.56	-0.052	0.74	-0.33	154.0	94.8
PC	±4.3	±1.5	±9.0	±14.1	±0.02	±6.2	±10.0	±9.2	±4.8	±2.9	±11.8	±0.14	±0.16	±0.026	±0.27			
%	80	55	20	10	10	60	70	40	65	20	80	80	10	85	80		20	10

♀ LOT #18

BXFM D36 RESERVE L96

Black (Homozygous Black)

Polled (Homozygous Polled)

ASA#: 4367043 Tattoo: L96
DOB: 2023-11-19 3/4 SM 1/4 AN

HHS MR ENTOURAGE 867B

LCDR RESERVE 210J

LCDR MS ECHO 43E

GIBBS 1224Y SM G-FORCE

BXFM D36

CALLAWAYS RITA 1636

Birth Actual	Adj. Weaning	Adj. Yearling
70	594	1278

IMF	REA
3.00	15.49



	CE	Brth	Wean	Year	ADG	MCE	Milk	MWW	Stay	Doc	CW	YG	Marb	BF	REA	SF	API	TI
EPD	10.8	0.1	77.7	121.4	0.27	6.9	17.7	56.5	13.1	12.9	38.0	-0.29	0.79	-0.027	1.06	-0.36	151.6	91.4
PC	±4.4	±1.5	±8.6	±13.4	±0.01	±6.4	±10.1	±9.1	±5.0	±2.9	±11.6	±0.14	±0.17	±0.027	±0.28	±0.235		
%	75	50	45	45	50	50	95	75	70	45	35	30	10	70	5		25	15

♀ LOT #19

BXFM E34 RESERVE L46

Black (Homozygous Black)

Polled (Homozygous Polled)

ASA#: 4367026 Tattoo: L46
DOB: 2023-11-3 5/8 SM 5/16 AN 1/16 CS

HHS MR ENTOURAGE 867B

LCDR RESERVE 210J

LCDR MS ECHO 43E

K C F BENNETT FORTRESS

BXFM E34

BXFM C99

Birth Actual	Adj. Weaning	Adj. Yearling
75	573	1193

IMF	REA
2.51	13.23



	CE	Brth	Wean	Year	ADG	MCE	Milk	MWW	Stay	Doc	CW	YG	Marb	BF	REA	SF	API	TI
EPD	12.7	-0.9	85.7	134.2	0.3	8.2	18.4	61.2	13.7									
PC	±4.4	±1.5	±8.6	±13.4	±0.01	±6.3	±10.1	±9.1	±5.0									
%	50	35	20	30	30	90	55	65										

	Doc	CW	YG	Marb	BF	REA	SF	API	TI
EPD	14.6	41.4	-0.13	0.62	-0.005	0.78		150.5	93.1
PC	±2.9	±12.0	±0.14	±0.16	±0.028	±0.27			
%	25	25	80	20	90	35		25	15

**SIRE GROUP //
KBHR GUNSMOKE J131**



KBHR Gunsmoke J131 offers top tier carcass genetics without sacrificing one thing. He is a bigger framed bull than we generally cross with, but we have not seen issues when matching with our cows. Again, KBHR Gunsmoke J131 goes back to the dam of Global and Bold Ruler.



Birth Actual	Adj. Weaning	Adj. Yearling
82	737	1259

IMF	REA
3.45	14.09

LBR5 GENESIS G69
KBHR GUNSMOKE J131
KBHR E197

LOT #20 ♀

BXFM H45 GUNSMOKE L73

Black (Homozygous Black)

Polled (Homozygous Polled)

ASA#: 4367044 Tattoo: L73
DOB: 2023-11-13 1/2 SM 1/2 AN

HOOVER COUNSELOR N29

BF E9 SATIN LADY H45

BF T1312 SATIN LADY E9

	CE	Brth	Wean	Year	ADG	MCE	Milk	MWW	Stay	Doc	CW	YG	Marb	BF	REA	SF	API	TI
EPD	11.9	0.0	84.7	135.5	0.32	5.3	30.4	73.1	18.7	13.5	50.5	-0.04	1.03	0.012	0.74		179.6	102.2
PC	±4.4	±1.6	±9.0	±13.9	±0.02	±6.2	±10.1	±9.1	±5.0	±2.9	±12.0	±0.14	±0.16	±0.026	±0.28	±0.235		
%	60	50	20	20	20	80	10	10	15	35	10	95	2	99	40		3	2

Lot #20 is a result of first cross SimAngus genetics off of a dam who is extremely fancy with a perfect udder. He is in the top 3% for API and the top 2% for TI. This is an exceptional bull that should go to collection and be sampled. We have a lot of faith in L73 and would be interested to use him in our program. His great granddam remained in our herd and produced until 15. Her last heifer calf by Honor is in our first calf heifer group this year.



Birth Actual	Adj. Weaning	Adj. Yearling
79	725	1287

IMF	REA
2.30	14.56

LBR5 GENESIS G69
KBHR GUNSMOKE J131
KBHR E197

LOT #21 ♀

BXFM H10A GUNSMOKE L59

Black (Homozygous Black)

Polled (Homozygous Polled)

ASA#: 4366978 Tattoo: L59
DOB: 2023-11-5 1/2 SM 1/2 AN

HOOVER COUNSELOR N29

BF F11 ELVERELDA H10A

BF EVERALDA F11

	CE	Brth	Wean	Year	ADG	MCE	Milk	MWW	Stay	Doc	CW	YG	Marb	BF	REA	SF	API	TI
EPD	13.1	-1.1	83.4	129.9	0.29	6.5	32.0	74.0	15.4	10.0	39.4	-0.05	0.74	0.005	0.6		159.5	95.8
PC	±4.4	±1.6	±9.0	±13.9	±0.02	±6.2	±10.1	±9.1	±5.0	±2.9	±12.0	±0.14	±0.17	±0.028	±0.28			
%	45	30	25	25	35	60	5	10	45	80	30	95	10	95	65		15	10

Lot #21 is one of my favorites of all the bulls offered. This bull is exactly where he needs to be numerically and phenotypically. His dam, BF F11 Elverelda H10A, is as good of a young Angus cow as we own.

♀ LOT #22

BXFM F34 GUNSMOKE L23

Black (*Homozygous Black*)

Polled (*Homozygous Polled*)

ASA#: 4366984 Tattoo: L23
DOB: 2023-10-30 5/8 SM 3/8 AN

LBRG GENESIS G69

EZAR GOLD RUSH 6001

KBHR GUNSMOKE J131

BXFM F34

KBHR E197

BXFM A8

Birth Actual	Adj. Weaning	Adj. Yearling
75	632	1304

IMF	REA
2.60	14.27



	CE	Brth	Wean	Year	ADG	MCE	Milk	MWW	Stay	Doc	CW	YG	Marb	BF	REA	SF	API	TI
EPD	12.1	0.4	87.0	143.2	0.35	8.0	23.9	68.1	16.8	7.6	45.0	-0.18	0.61	-0.01	0.94		154.8	93.1
PC	±4.3	±1.5	±8.6	±13.4	±0.01	±6.2	±9.9	±8.8	±4.9	±2.8	±11.8	±0.14	±0.16	±0.027	±0.28			
%	60	60	15	10	10	35	50	25	30	95	20	65	20	90	15		20	15

♀ LOT #23

BXFM E26 GUNSMOKE L107

Black (*Homozygous Black*)

Polled (*Homozygous Polled*)

ASA#: 4367029 Tattoo: L107
DOB: 2023-11-23 3/4 SM 1/4 AN

LBRG GENESIS G69

GW-WBF SUBSTANCE 820Y

KBHR GUNSMOKE J131

BXFM E26

KBHR E197

BXFM C73

Birth Actual	Adj. Weaning	Adj. Yearling
68	677	1287

IMF	REA
2.40	15.45

	CE	Brth	Wean	Year	ADG	MCE	Milk	MWW	Stay
EPD	14.6	-1.9	82.2	121.9	0.25	8.1	23.0	63.8	21.8
PC	±4.4	±1.5	±8.6	±13.4	±0.01	±6.1	±10.0	±9.0	±4.8
%	30	20	30	40	60	30	60	45	2

	Doc	CW	YG	Marb	BF	REA	SF	API	TI
EPD	14.1	25.2	-0.29	0.59	-0.029	0.88	-0.45	167.3	92.3
PC	±2.8	±11.8	±0.14	±0.16	±0.027	±0.28			
%	30	75	30	20	70	20		10	15

♀ LOT #24

BXFM G45 GUNSMOKE L14

Black (*Homozygous Black*)

Polled (*Homozygous Polled*)

ASA#: 4366929 Tattoo: L14
DOB: 2023-10-27 3/4 SM 1/4 AN

LBRG GENESIS G69

CCR COWBOY CUT 5048Z

KBHR GUNSMOKE J131

BXFM BELLE G45

KBHR E197

BF B2

Birth Actual	Adj. Weaning	Adj. Yearling
65	608	1153

IMF	REA
3.63	15.22

	CE	Brth	Wean	Year	ADG	MCE	Milk	MWW	Stay
EPD	12.9	0.5	77.4	111.3	0.21	7.8	25.8	64.7	15.1
PC	±4.3	±1.5	±8.5	±13.1	±0.01	±6.0	±9.8	±8.7	±4.7
%	50	60	45	65	85	35	35	40	50

	Doc	CW	YG	Marb	BF	REA	SF	API	TI
EPD	15.6	27.1	-0.05	0.95	0.017	0.54	-0.41	162.8	94.0
PC	±2.8	±11.4	±0.13	±0.16	±0.026	±0.27			
%	15	70	95	2	99	75		10	10

**SIRE GROUP //
KBHR BOLD RULER H152**



KBHR Global J138 and KBHR Bold Ruler H152 are full brothers. We have used both sires in our breeding program. There are some minor differences in offspring but we have been extremely pleased with both bulls. Their dam, BAR CK MS X38 106Z is very special.



Birth Actual	Adj. Weaning	Adj. Yearling
57	667	1351

IMF	REA
2.07	15.36

LOT #25 ♀

BXFM J2 RULER L6

Black (*Homozygous Black*)

Polled (*Homozygous Polled*)

ASA#: 4366964 Tattoo: L6
DOB: 2023-10-11 3/4 SM 1/8 AN 1/8 CS

WS PROCLAMATION E202

HOOK'S EAGLE 6E

KBHR BOLD RULER H152

BXFM J2

BAR CK MS X38 106Z

BXFM G70

	CE	Brth	Wean	Year	ADG	MCE	Milk	MWW	Stay	Doc	CW	YG	Marb	BF	REA	SF	API	TI
EPD	16.3	0.5	104.3	165.9	0.38	8.2	25.8	77.8	11.4	16.7	52.5	-0.27	0.59	-0.067	0.89	-0.35	155.3	104.0
PC	±4.2	±1.5	±8.6	±13.4	±0.01	±6.0	±10.0	±9.0	±4.7	±2.8	±11.6	±0.13	±0.16	±0.026	±0.27	±0.235		
%	15	60	1	1	3	30	35	3	85	10	10	35	20	20	20		20	1

This KBHR Bold Ruler H152 son goes back to our foundation SimAngus genetics. He has elite weaning and yearling EPDs being in the top 1%. He is also in the top 1% for TI.

BAXLEY FAMILY FARMS CATTLE DEVELOPMENT

We have owned and have been breeding SimAngus cattle approximately 40 years. Early on, we determined that the cattle operation was beneficial to our crop rotation. Cover crops are a great resource to accommodate grazing, year round. We also have cattle graze crop refuse left in the fields. The cattle utilize the cover crops and refuse for growth while increasing the fertility of our crop land. This is a win-win situation. We believe because of these practices, the southeast has the environment and great potential for expansion in the cattle industry.

Our mature cows calve in the Fall and make it through the Winters by grazing rye and eating coastal bermuda hay. In the Spring, they graze on rye grass and later are turned out on Summer pastures. The calves are not creep fed during this time. Their dams are expected to raise calves that have 600+ pound weaning weights. The first calf heifers are supplemented with a Total Mix Ration feed after the birth of their calves until the time of breeding.

After weaning, the breeding stock (bulls and heifers) are offered continuous grazing. They are introduced to and limit fed a high roughage ration formulated by Buck Chastain of KNS Nutrition. Most of the products used in the ration are grown on the farm.

At Baxley Family Farms, we try to feed with proper development and longevity of the cattle in mind.

HERD HEALTH AND GUARANTEES

- All animals, including sale animals, are properly vaccinated and boosted annually.
- All animals are treated at least twice yearly for parasites with a pour-on, oral safe-guard and/or Safe-Guard blocks.
- All open heifers are guaranteed to be capable breeders, subject to proper management and suitable nutritional and physical health.
- All bulls are guaranteed to be sound on sale day. Each bull will have successfully passed a complete breeding soundness exam performed within 30 days of the sale.

Baxley Family Farms can not guarantee every sale animal will perform perfectly, but we do guarantee that we will strive to make things right if they do not!

- In the event a heifer proves to be a non-breeder, the customer must contact Baxley Family Farms by July 1, 2025. The customer will be given full purchase price credit, minus salvage value, to be used in a future purchase.
- Each bull is guaranteed for one breeding season, subject to proper management and suitable nutritional and physical health. In the event a customer has any problem with a bull, Baxley Family Farms must be contacted immediately. A replacement bull of equal quality will be provided if one is available. If a satisfactory replacement is not available, the customer will be given full purchase price credit, minus salvage value, to be used in a future purchase.

Dr. Addie Fogel Owens will be available for health questions and out of state health certificates on the day of the sale.

SIRE GROUP //
TJ STONE COLD 336G

TJ Stone Cold 336G has a limited offering of bulls and heifers at this sale. Some years, things just work out that way. He has earned the reputation for siring very solid cattle. The heifers that we have that Stone Cold sired have some of the fanciest udders and great overall phenotypes. This seems to be happening for everyone who used him. We lost Stone Cold this fall, due to injury.



♀ LOT #26

BXFM H73 STONE COLD L111
Black (Homozygous Black)
Polled (Homozygous Polled)

ASA#: 4366938 Tattoo: L111
DOB: 2023-11-24 1/2 SM 1/2 AN

TJ FROSTY 318E BF PAID UP E20
TJ STONE COLD 336G **BXFM H73**
TJ 11D BXFM C62

Birth Actual	Adj. Weaning	Adj. Yearling
69	701	1262
IMF		REA
2.98		12.97

CE	Brth	Wean	Year	ADG	MCE	Milk	MWW	Stay	
EPD	18.6	-3.1	80.7	134.8	0.34	11.7	31.0	71.3	15.7
PC	±4.4	±1.6	±8.8	±13.6	±0.01	±6.1	±9.8	±8.7	±5.0
%	4	10	35	20	10	3	10	15	40

Doc	CW	YG	Marb	BF	REA	SF	API	TI
EPD	17.3	49.5	0.01	0.79	-0.007	0.43	174.2	98.7
PC	±2.9	±11.8	±0.14	±0.16	±0.026	±0.28		
%	10	15	99	10	90	90	4	4

♀ LOT #28

BXFM H55 STONE COLD L122
Black (Homozygous Black)
Polled (Homozygous Polled)

ASA#: 4366937 Tattoo: L122
DOB: 2023-12-3 1/2 SM 1/2 AN

TJ FROSTY 318E BF PAID UP E20
TJ STONE COLD 336G **BXFM H55**
TJ 11D BXFM C9

Birth Actual	Adj. Weaning	Adj. Yearling
70	680	1332
IMF		REA
2.59		13.22

CE	Brth	Wean	Year	ADG	MCE	Milk	MWW	Stay	
EPD	18.1	-5.0	72.3	108.6	0.23	10.7	28.6	64.7	20.9
PC	±4.4	±1.6	±9.0	±13.6	±0.01	±6.1	±10.0	±8.8	±4.9
%	10	2	65	70	75	10	20	40	3

Doc	CW	YG	Marb	BF	REA	SF	API	TI
EPD	13.5	31.5	-0.09	0.62	-0.004	0.55	172.4	90.8
PC	±2.9	±11.8	±0.14	±0.16	±0.027	±0.28		
%	35	55	85	20	90	75	5	20

♀ LOT #27

BXFM H142 STONE COLD L116
Black (Homozygous Black)
Polled (Homozygous Polled)

ASA#: 4366926 Tattoo: L116
DOB: 2023-11-27 1/2 SM 1/2 AN

TJ FROSTY 318E BXFM HIDE OUT F31
TJ STONE COLD 336G **BXFM 1601 MISS H142**
TJ 11D HH MISS 060L 154 1601

Birth Actual	Adj. Weaning	Adj. Yearling
68	616	1230
IMF		REA
2.25		14.82

CE	Brth	Wean	Year	ADG	MCE	Milk	MWW	Stay	
EPD	16.1	-1.9	74.2	124.3	0.31	7.7	25.9	62.7	11.4
PC	±4.4	±1.6	±8.8	±13.9	±0.02	±6.0	±9.9	±8.8	±5.0
%	15	20	60	35	25	40	35	50	85

Doc	CW	YG	Marb	BF	REA	SF	API	TI	
EPD	13.9	34.6	-0.18	0.34	-0.022	0.71	-0.29	133.9	82.2
PC	±2.9	±12.0	±0.14	±0.16	±0.027	±0.27			
%	30	45	65	55	70	45	50	50	

CARE FOR YEARLING BULLS

Proper nutrition and care will aid in protecting your purchase investment. Each year, we generally clean up behind our AI program with yearling bulls. We have been very pleased with the way they maintain themselves in pasture conditions following our development program — the transition is handled with ease. When planning for breeding a general rule of thumb is “one cow per month of age.” Example: a 15 month old bull would be expected to cover 15 cows.

SIRE GROUP //
KBHR HONOR H060

We were very pleased with last year’s KBHR Honor H060 calves but this year’s are equally as good, or better. Honor was matched with particular cows in our herd through Top Genomics and the results are amazing. We have just calved out our first set of Honor heifers and they are certainly jewels for the future of our herd.



Birth Actual	Adj. Weaning	Adj. Yearling
62	690	1320
IMF		REA
1.65		14.34

HOOK’S BEACON 56B
KBHR HONOR H060
WS MISS SUGAR C4

♀ LOT #29

BXFM J28 HONOR L9
Black (Homozygous Black)
Polled (Homozygous Polled)

ASA#: 4366930 Tattoo: L9
DOB: 2023-10-22 PB SM

MR SR HIGHLIFE G1609
BXFM J28
BXFM D16

CE	Brth	Wean	Year	ADG	MCE	Milk	MWW	Stay	Doc	CW	YG	Marb	BF	REA	SF	API	TI	
EPD	16.2	-1.3	79.0	123.5	0.28	8.8	30.9	70.3	21.0	9.2	37.0	-0.36	0.27	-0.071	0.92	-0.36	161.3	87.8
PC	±4.0	±1.4	±8.2	±12.6	±0.01	±5.5	±9.2	±8.2	±4.5	±2.6	±10.6	±0.13	±0.15	±0.024	±0.24			
%	10	15	45	35	30	15	5	20	4	80	20	65	35	50	40	15	25	

Lot #29 is a special bull — his dam is phenomenal. He has a lot of chrome.

♀ LOT #30

BXFM H11 HONOR L50
Black (Homozygous Black)
Polled (Homozygous Polled)

ASA#: 4366971 Tattoo: L50
DOB: 2023-11-4 PB SM

HOOK’S BEACON 56B GIBBS 7382E BROAD RANGE
KBHR HONOR H060 **BXFM H11**
WS MISS SUGAR C4 BXFM F97

Birth Actual	Adj. Weaning	Adj. Yearling
100	666	1342
IMF		REA
2.76		13.25

CE	Brth	Wean	Year	ADG	MCE	Milk	MWW	Stay	
EPD	9.4	3.2	96.0	159.9	0.4	4.4	28.1	76.1	19.7
PC	±4.2	±1.5	±8.5	±13.1	±0.01	±5.8	±9.5	±8.5	±4.7
%	80	90	5	2	1	80	15	4	10

Doc	CW	YG	Marb	BF	REA	SF	API	TI	
EPD	10.5	62.7	-0.2	0.45	-0.043	0.98	-0.38	159.8	96.0
PC	±2.7	±11.2	±0.13	±0.15	±0.024	±0.26			
%	65	1	99	15	95	30	15	10	

♀ LOT #31

BXFM Z5 HONOR L32
Black (Homozygous Black)
Polled (Homozygous Polled)

ASA#: 4366961 Tattoo: L32
DOB: 2023-11-2 PB SM

HOOK’S BEACON 56B TJ 57J THE GAMBLER
KBHR HONOR H060 **BXFM Z5**
WS MISS SUGAR C4 CR FOX Y LADY M25

Birth Actual	Adj. Weaning	Adj. Yearling
79	636	1387
IMF		REA
3.59		15.52

CE	Brth	Wean	Year	ADG	MCE	Milk	MWW	Stay	
EPD	14.0	-0.5	78.5	124.7	0.29	8.7	29.1	68.3	18.0
PC	±4.1	±1.5	±8.5	±13.1	±0.01	±5.8	±9.3	±8.3	±4.6
%	20	20	50	35	25	15	15	25	25

Doc	CW	YG	Marb	BF	REA	SF	API	TI	
EPD	10.0	47.8	-0.36	0.43	-0.052	1.22	-0.36	160.2	90.4
PC	±2.8	±11.2	±0.13	±0.15	±0.024	±0.25			
%	70	5	65	15	85	4	15	20	

♀ **LOT #39**

BXFM G56 GALILEO L43

Black (*Homozygous Black*)
Polled (*Homozygous Polled*)

ASA#: 4366931 Tattoo: L43
DOB: 2023-11-3 3/4 SM 1/4 AN

BRIDLE BIT ECLIPSE E744

GIBBS 6155D SUPER DUTY

HOOK'S GALILEO 210G

BXFM G56

HOOK'S EVITA 18E

BXFM D64

Birth Actual	Adj. Weaning	Adj. Yearling
58	645	1274

IMF	REA
2.62	14.73



	CE	Brth	Wean	Year	ADG	MCE	Milk	MWW	Stay	Doc	CW	YG	Marb	BF	REA	SF	API	TI
EPD	20.4	-3.6	71.3	108.1	0.23	14.1	35.9	71.4	23.8	17.6	51.4	-0.15	0.78	-0.016	0.88	-0.36	187.6	93.9
PC	±4.2	±1.5	±8.6	±13.4	±0.01	±5.8	±9.5	±8.5	±4.8	±2.8	±11.4	±0.13	±0.15	±0.026	±0.26			
%	2	10	70	70	75	1	1	15	1	10	10	75	10	85	20		1	10

SIRE GROUP //
BALDRIDGE GIBSON G859

Baldrige Gibson G859 worked well with our cattle, both purebreds and percentage cattle. Both bulls offered are powerful.



♀ **LOT #40**

BXFM H78 GALILEO L49

Black (*Homozygous Black*)
Polled (*Homozygous Polled*)

ASA#: 4366945 Tattoo: L49
DOB: 2023-11-4 1/2 SM 1/2 AN

BRIDLE BIT ECLIPSE E744

GIBBS 6155D SUPER DUTY

HOOK'S GALILEO 210G

BXFM H78

HOOK'S EVITA 18E

BF Y93

Birth Actual	Adj. Weaning	Adj. Yearling
69	701	1262

IMF	REA
2.98	12.97



	CE	Brth	Wean	Year	ADG	MCE	Milk	MWW	Stay
EPD	16.8	-3.7	73.9	118.0	0.28	11.1	29.2	66.2	20.3
PC	±4.2	±1.5	±8.8	±13.6	±0.01	±5.9	±9.6	±8.6	±4.9
%	15	10	60	50	40	4	15	30	4

	Doc	CW	YG	Marb	BF	REA	SF	API	TI
EPD	16.5	39.2	0.0	0.87	-0.003	0.38	-0.3	182.2	96.4
PC	±2.9	±11.4	±0.13	±0.15	±0.026	±0.26			
%	10	35	99	4	90	95		2	10

Our row crop farming actually niches well with our cattle operation. The photo of the soybean field reveals a nice stand of rye grass. Overseeding rye grass on soybeans before leaf drop is not a new practice. Many older farmers in our area broadcasted rye grass by using a spin spreader attached to a tractor — wide row spacing and smaller plants helped facilitate this practice. This rye grass crop was overseeded with a drone. Drone cover crop seeding is becoming popular due to zero crop damage and the ability to seed regardless of ground conditions. Much of our row crop land provides winter grazing for our cow/calf pairs.

LOT #41 ♀

BXFM H32 GIBSON L36

Black
Polled

ASA#: 4366968 Tattoo: L36
DOB: 2023-11-3 1/2 SM 1/2 AN

CONNEALY CONFIDENCE PLUS

GIBBS 7382E BROAD RANGE

BALDRIDGE GIBSON G859

BXFM H32

BALDRIDGE ISABEL B061

BXFM D38

Birth Actual	Adj. Weaning	Adj. Yearling
78	681	1415

IMF	REA
2.72	14.13



	CE	Brth	Wean	Year	ADG	MCE	Milk	MWW	Stay	Doc	CW	YG	Marb	BF	REA	SF	API	TI
EPD	13.2	-1.9	88.2	148.7	0.38	6.6	32.0	76.4	17.8	11.0	60.0	-0.06	0.64	0.027	1.04		164.5	97.8
PC	±4.3	±1.5	±8.8	±13.9	±0.02	±5.8	±10.0	±9.1	±5.0	±2.9	±12.2	±0.14	±0.16	±0.026	±0.28	±0.237		
%	45	20	15	10	3	55	5	4	20	70	3	90	15	99	10		10	5

♀ **LOT #42**

BXFM J116 GIBSON L11

Black (*Homozygous Black*)
Polled (*Homozygous Polled*)

ASA#: 4366980 Tattoo: L11
DOB: 2023-10-23 3/8 SM 5/8 AN

CONNEALY CONFIDENCE PLUS

GIBBS 8186F WID Y534

BALDRIDGE GIBSON G859

BXFM BELLE J116

BALDRIDGE ISABEL B061

BXFM BELLE F54

Birth Actual	Adj. Weaning	Adj. Yearling
64	689	1125

IMF	REA
2.43	13.34

	CE	Brth	Wean	Year	ADG	MCE	Milk	MWW	Stay
EPD	12.2	0.7	95.9	146.1	0.31	6.5	31.5	79.6	16.8
PC	±4.3	±1.6	±9.0	±13.9	±0.02	±5.9	±10.1	±9.1	±5.0
%	60	65	4	10	25	60	10	2	30

	Doc	CW	YG	Marb	BF	REA	SF	API	TI
EPD	12.3	57.5	0.05	0.61	0.015	0.59		150.7	95.2
PC	±2.9	±12.2	±0.14	±0.16	±0.026	±0.28			
%	55	4	99	20	99	70		25	10



SIRE GROUP //
LRS RARITY 983J



♀ LOT #43

BFXM E75 RARITY L89

Black (Heterozygous Black)
Polled (Homozygous Polled)

ASA#: 4367024 Tattoo: L89
DOB: 2023-11-15 5/8 SM 3/8 AN

TEHAMA TAHOE B767

LRS RARITY 983J

LRS MS EAGLE 983G

Birth Actual	Adj. Weaning	Adj. Yearling
86	634	1356

IMF	REA
2.30	14.33



GIBBS 3393A STATEMENT

BFXM E75

BFXM A7

	CE	Brth	Wean	Year	ADG	MCE	Milk	MWW	Stay	Doc	CW	YG	Marb	BF	REA	SF	API	TI
EPD	10.0	3.0	98.7	159.4	0.38	4.3	23.8	73.2	15.5	15.5	57.1	-0.3	0.19	-0.058	1.09		127.1	86.8
PC	±4.4	±1.5	±8.8	±13.6	±0.01	±6.2	±10.1	±9.1	±4.9	±2.9	±11.8	±0.14	±0.16	±0.027	±0.27	±0.237		
%	85	95	2	2	3	90	55	10	45	20	4	30	80	30	4		65	30

♀ LOT #44

BFXM F36 RARITY L113

Black (Homozygous Black)
Polled (Homozygous Polled)

ASA#: 4366983 Tattoo: L113
DOB: 2023-11-25 5/8 SM 3/8 AN

TEHAMA TAHOE B767

LRS RARITY 983J

LRS MS EAGLE 983G

Birth Actual	Adj. Weaning	Adj. Yearling
75	641	1077

IMF	REA
1.56	11.39

ACW IRONHIDE 395Y

BFXM F36

BFXM A64

	CE	Brth	Wean	Year	ADG	MCE	Milk	MWW	Stay	Doc	CW	YG	Marb	BF	REA	SF	API	TI
EPD	14.6	2.0	86.2	133.5	0.3	6.4	23.2	66.4	15.8									
PC	±4.3	±1.6	±8.8	±13.6	±0.01	±6.2	±10.2	±9.1	±5.0									
%	30	85	20	20	30	60	60	30	40									

	Doc	CW	YG	Marb	BF	REA	SF	API	TI
EPD	16.1	60.9	-0.19	0.01	-0.054	0.84		118.3	75.3
PC	±2.9	±11.8	±0.14	±0.16	±0.027	±0.28			
%	15	3	60	99	30	25		75	70

Our 2024 high selling bull BFXM Stoney Run K15 was purchased by the Tom Chestnut family from Alabama. After our sale, we negotiated to buy half interest in Stoney Run and to clean up a set of heifers behind AI. The Chestnuts' breeding season was nearly over and we all wanted to get some progeny on the ground ASAP. Stoney Run was 100% confirmed bred on cleanup and we've not touched a calf to assist birth. Average birthweight is 65 lbs. Stoney Run came out of the set of heifers in great shape. We supplemented him and the heifers with a TMR until we turned out on spring grass. This fall (late September) he weighed in at 1650 lbs. He then went to collection at Lookout Mountain where he immediately froze high quality semen. We will have semen available on this young prospect at our sale. His first progeny will be available at next year's sale.

SIRE GROUP //
CONNELY COMMERCE



These Connealy Commerce bulls have been in deep company. BFF has retained all of his daughters from this age group. They are long, soggy, beautiful Angus heifers who are bred very similarly to these stout bulls. The animals have a very good disposition along with all the needed features. We should have used Commerce to make FI crosses the first season we used him; however, we are wiser now and the half-blood Commerce calves were born this Fall.



Birth Actual	Adj. Weaning	Adj. Yearling
76	741	1350

IMF	REA
2.54	13.55

G A R SUNBEAM
CONNELY COMMERCE

AVIRA OF CONANGA 814R

♀ LOT #45

BF E88 COMMERCE L54

Black (Homozygous Black)
Polled (Homozygous Polled)

AAA#: 21074844 ASA#: 4367005 Tattoo: L54
DOB: 2023-11-4 PB AN

CONNELY CONSENSUS 7229

BF 846 LUCY E88

HHCC LUCY 8005-517 846

	CE	Brth	Wean	Year	ADG	MCE	Milk	MWW	Stay	Doc	CW	YG	Marb	BF	REA	SF	API	TI
EPD	16.7	-1.9	92.5	147.0	0.34	11.4	29.5	76.3	12.1	11.9	60.3	0.11	0.55	0.049	0.71		132.5	85.3
PC	±4.2	±1.5	±8.8	±13.9	±0.02	±5.9	±10.0	±9.1	±5.1	±2.9	±12.0	±0.14	±0.15	±0.025	±0.28	±0.237		
%	15	20	10	10	10	4	15	4	80	60	3	99	25	99	45		55	35

♀ LOT #46

BF 1544 COMMERCE L53

Black
Polled

AAA#: 21074869 ASA#: 4369349 Tattoo: L53
DOB: 2023-11-4 PB AN

HHCC NEW DAY 946 512 1264

HHCC LUCY 1264 749 1554

HHCC LUCY 542-517 749



Birth Actual	Adj. Weaning	Adj. Yearling
75	668	1307

IMF	REA
2.10	14.65

G A R SUNBEAM
CONNELY COMMERCE

AVIRA OF CONANGA 814R

	CE	Brth	Wean	Year	ADG	MCE	Milk	MWW	Stay	Doc	CW	YG	Marb	BF	REA	SF	API	TI
EPD	12.8	-0.6	87.0	145.4	0.36	9.9	25.9	69.6	12.6	10.8	61.3	0.29	0.59	0.073	0.34		126.5	80.1
PC	±4.2	±1.6	±9.0	±14.1	±0.02	±6.1	±10.2	±9.3	±5.2	±3.0	±12.0	±0.14	±0.16	±0.026	±0.28	±0.237		
%	50	40	15	10	10	15	35	20	75	75	3	99	20	99	95		65	55

♀ LOT #47

BF A79 COMMERCE L29

Black (*Homozygous Black*)

Polled

AAA#: 21074849 ASA#: 4366987 Tattoo: L29
DOB: 2023-11-2 PB AN

G A R SUNBEAM

KESSLERS FRONTMAN R001

CONNEALY COMMERCE

BF A79

AVIRA OF CONANGA 814R

BF Y57

Birth Actual	Adj. Weaning	Adj. Yearling
63	639	1316

IMF	REA
2.39	14.00



	CE	Brth	Wean	Year	ADG	MCE	Milk	MWW	Stay	Doc	CW	YG	Marb	BF	REA	SF	API	TI
EPD	20.7	-2.6	87.8	146.9	0.37	15.1	28.6	73.3	8.7	11.2	63.4	0.22	0.53	0.065	0.54		129.8	82.9
PC	±4.0	±1.5	±8.6	±13.6	±0.01	±5.8	±9.8	±8.8	±5.0	±2.8	±11.6	±0.13	±0.15	±0.025	±0.28			
%	2	15	15	10	4	1	20	10	95	70	2	99	25	99	75		60	45

♀ LOT #48

BF Z72 COMMERCE L78

Black (*Homozygous Black*)

Polled (*Homozygous Polled*)

AAA#: 21074868 ASA#: 4366917 Tattoo: L78
DOB: 2023-11-13 PB AN

G A R SUNBEAM

S A V MUSTANG 9134

CONNEALY COMMERCE

BF Z72

AVIRA OF CONANGA 814R

CALLAWAYS BLACKCAP 1288

Birth Actual	Adj. Weaning	Adj. Yearling
77	719	1355

IMF	REA
3.49	14.39



	CE	Brth	Wean	Year	ADG	MCE	Milk	MWW	Stay	Doc	CW	YG	Marb	BF	REA	SF	API	TI
EPD	17.9	-1.3	93.3	154.4	0.38	13.6	28.3	76.5	11.8	12.5	54.1	0.09	0.76	0.032	0.56		145.7	90.8
PC	±4.1	±1.5	±8.8	±13.9	±0.02	±5.8	±9.9	±9.1	±5.0	±2.8	±11.6	±0.13	±0.15	±0.025	±0.27	±0.237		
%	10	30	10	3	3	1	20	4	80	50	10	99	10	99	75		30	20

**SIRE GROUP //
BALDRIDGE GIBSON G859**

Baldridge Gibson G859 worked well crossing with purebreds and percentage cattle.

♀ LOT #49

BF J52 GIBSON L8

Black (*Homozygous Black*)

Polled (*Homozygous Polled*)

AAA#: 21075719 ASA#: 4367037 Tattoo: L8
DOB: 2023-10-11 PB AN

CONNEALY CONFIDENCE PLUS

S A V RAINFALL 6846

BALDRIDGE GIBSON G859

BF SATIN LADY J52

BALDRIDGE ISABEL B061

BF T1312 SATIN LADY E9

Birth Actual	Adj. Weaning	Adj. Yearling
61	730	1239

IMF	REA
4.87	14.66

	CE	Brth	Wean	Year	ADG	MCE	Milk	MWW	Stay	Doc	CW	YG	Marb	BF	REA	SF	API	TI
EPD	14.2	-3.5	85.8	147.2	0.38	7.8	35.9	79.0	18.2									
PC	±4.2	±1.6	±8.6	±13.6	±0.01	±5.7	±9.6	±8.8	±5.0									
%	35	10	20	10	3	35	1	2	15									

	Doc	CW	YG	Marb	BF	REA	SF	API	TI
EPD	13.4	57.0	0.21	1.06	0.063	0.47		171.4	96.5
PC	±2.9	±12.0	±0.14	±0.16	±0.026	±0.28			
%	40	5	99	1	99	85		5	10

SIRE GROUP // KCF BENNETT ND H725

♀ LOT #50

BF E84 BENNETT L115

Black

Polled

AAA#: 21067921 ASA#: 4367049 Tattoo: L115
DOB: 2023-11-27 PB AN

HOOVER NO DOUBT

HOOVER DAM

K C F BENNETT ND H725

BF 1554 LUCY E84

K C F MISS 1682 D673

HHCC LUCY 1264 749 1554

Birth Actual	Adj. Weaning	Adj. Yearling
73	679	1310

IMF	REA
2.35	14.22



	CE	Brth	Wean	Year	ADG	MCE	Milk	MWW	Stay	Doc	CW	YG	Marb	BF	REA	SF	API	TI
EPD	14.9	-1.2	78.1	132.6	0.34	9.6	25.0	64.1	16.6	14.7	62.1	0.18	0.68	0.037	0.4		140.5	78.6
PC	±4.3	±1.6	±9.5	±14.9	±0.02	±6.0	±9.9	±9.1	±5.0	±4.1	±12.4	±0.14	±0.15	±0.026	±0.28	±0.237		
%	25	30	45	25	10	15	45	40	30	25	2	99	15	99	95		40	60

AVAILABLE THROUGH CAROLINA EASTERN - KINGSTREE

LEARN ABOUT OUR SPECIALTY PRODUCTS ONLINE AT
CROPEXCELLENCE.COM

Instagram, Facebook, YouTube icons

QUICK REFERENCE TO ASA EPD AND \$ INDEXES

Expected Progeny Differences (EPD): EPD are the most accurate and effective tool available for comparing genetic levels. In using EPD, the difference between two sires' EPD represents the unit difference expected in the performance of their progeny. For example, if sires A and B have EPD of +10 and -5, a 15-unit difference would be expected in their progeny (moving from -5 to +10 yields 15 units). Key to using EPD is knowing what units they are expressed in. For example, if the above case referred to weaning weight EPD, A would be expected to sire 15-pounds more weaning weight than B. If calving ease were the trait, A would be expected to sire 15-percent more unassisted births in first-calf heifers; in other words, if B sired 30 assists in a group of 100 heifers, we'd expect A to require 15 assists. A percentile-ranking chart is required to determine where a bull's EPD rank him relative to other bulls in the breed. For percentile rankings or more detailed information about EPD and \$ indexes visit www.simmental.org. Listed below are the units ASA EPD are expressed in:

All-Purpose Index (API): Dollars per cow exposed under an all-purpose-sire scenario. (See below for more details.)

Back Fat (BF): Inches of backfat.

Birth Weight (BW): Pounds of birth weight.

Calving Ease (CE): Percent of unassisted births when used on heifers.

Carcass Weight (CW): Pounds of carcass weight.

Maternal Calving Ease (MCE): Percent of unassisted births in first-calving daughters.

Milk (MLK): Pounds of weaning weight due to milk.

Marbling (MRB): Marbling score.

Maternal Weaning Weight (MWW): Pounds of weaning weight due

to milk and growth.

Ribeye Area (REA): Square inches of ribeye.

Warner-Bratzler Shear Force (WBSF): Pounds of force required to shear a steak.

Stayability (STAY): Percent of daughters remaining in the cowherd at 6 years of age.

Terminal Index (TI): Dollars per cow exposed under a terminal-sire scenario. (See below for more details.)

Weaning Weight (WW): Pounds of weaning weight.

Yearling Weight (YW): Pounds of yearling weight.

Yield Grade (YG): Yield grade score.

\$ Indexes: Though EPDs allow for the comparison of genetic levels for many economically important traits, they only provide a piece of the economic puzzle. That's where \$ indexes come in. Through well conceived, rigorous mathematical computation, \$ indexes blend EPD and economics to estimate an animal's overall impact on your bottom line. The same technology that led to the dramatic progress in swine, poultry and dairy genetics over the last several decades was used to develop the following \$ indexes:

All-Purpose Index (API): Evaluates sires for use on the entire cow herd (bred to both Angus first-calf heifers and mature cows) with the portion of their daughters required to maintain herd size retained and the remaining heifers and steers put on feed and sold grade and yield.

Terminal Index (TI): Evaluates sire for use on mature Angus cows with all offspring put on feed and sold grade and yield.

Using API and TI: First, determine which index to use; if you're keeping replacements use API, if not, TI. Then, just as with EPD, zero in on the unit difference between bulls. (As described above, index units are in dollars per cow exposed.) The difference can be used to determine how much a bull is worth compared to another. Or, put another way, how much you can pay for one bull compared to another. For example, when buying an all-purpose-type sire, you can quickly figure a bull scoring +100 for API is worth an extra \$6,000 over a +50 bull if both are exposed to 30 cows over 4 years (\$50 diff. x 30 hd. x 4 yr. = \$6,000). A percentile-ranking chart is required to determine where a bull's index value ranks him relative to other bulls in the breed. For percentile rankings or more detailed information about EPD and \$ indexes visit www.simmental.org.

AMERICAN ANGUS ASSOCIATION – THE BUSINESS BREED ACROSS BREED EPD ADJUSTMENT FACTORS

Researchers at the Roman L. Hruska U.S. Meat Animal Research Center (MARC) in Clay Center, Neb., develop breed adjustment factors annually so that expected progeny difference (EPD) values can be compared across breeds. This process allows the estimation of across-breed EPDs, sometimes referred to as AB-EPDs. The across-breed EPD concept was introduced in the late 1980's and continues to spark interest with commercial bull buyers using more than one breed of bull. This is mostly due to the fact that without adjustments, the within-breed EPDs cannot be used to directly compare animals of different breeds, since the values are typically computed separately for each breed.

Table 1 presents the most recent MARC adjustment factors that can be added to the EPDs of animals of different breeds, adjusting their EPD values to an Angus equivalent. The adjustment factors, given relative to an Angus equivalent of zero for each trait, take into account breed differences measured in the Germplasm Evaluation Project at MARC, as well as differences in breed average EPDs and base year. Animals of various breeds can be compared on the same EPD scale, after adding the specific adjustment factor to EPDs produced in the most recent genetic evaluations of the representative breeds. Use of these factors does not change differences in EPDs among bulls within a breed. However, it does affect differences among bulls of different breeds. The example below illustrates EPDs for Angus and Simmental bulls after across-breed adjustment factors have been applied to estimate AB-EPDs. The AB-EPDs for Simmental Bull #002 are on an Angus-equivalent scale and can be directly compared with values for Angus Bull #001.

It is important to remember that EPDs are not perfect when comparing bulls even within a breed; therefore, AB-EPDs are somewhat less accurate when comparing animals of different breeds. AB-EPDs are most effective for selecting bulls of two or more breeds for use in systematic crossbreeding. When evaluating the potential application of AB-EPDs as a tool for a particular breeding program, commercial cow-calf producers must first examine the needs of their individual operations. Producers must diligently review their breed choices and crossbreeding systems in order to provide the best sire selection match to cow genetic type, environment, feed resources, and market targets.

Table 1. Adjustment Factors to Estimate across-breed EPDs.

Breed	Birth Wt	Weaning Wt	Yearling Wt	Milk	Marbling Score	Ribeye Area	Fat Thickness	Carcass Wt
Angus	0.0	0.0	0.0	0.0	0.00	0.00	0.000	0.0
Hereford	1	- 14.4	- 41.8	- 11.3	- 0.34	0.04	- 0.076	- 70.8
Red Angus	2.3	- 19.2	- 28.5	1.4	- 0.09	0.27	- 0.038	- 10.0
Shorthorn	3.6	- 22.3	- 37.8	- 3.9	- 0.13	0.29	- 0.042	- 7.3
South Devon	6.4	- 33.9	- 66.7	7.5	- 0.06	0.45	- 0.066	- 12.2
Beefmaster	3.7	25.8	71	3.6				
Brahman	9.0	60.2	24.0	12.4	- 0.68	0.13	- 0.153	- 34.7
Brangus	2.6	17.4	12.5	15.1				
Santa Gertrudis	4.8	42.7	39.6	16.8	- 0.47	0.20	- 0.075	- 4.6
Braunvieh	3.9	- 17.6	- 35.9	21.8	- 0.13	0.99	- 0.034	- 16.3
Charolais	6.4	5.5	- 23.9	- 1.8	- 0.32	0.79	- 0.197	4.1
Chiangus	2.4	- 22.2	- 41.7	3.5	- 0.43	0.52	- 0.117	- 25.8
Gelbvieh	3.3	- 8.5	- 18.0	5.1	- 0.55	0.82	- 0.119	- 14.8
Limousin	1.7	- 8.1	- 31.4	- 4.7	- 0.28	0.67	- 0.071	- 10.0
Maine Anjou	1.9	- 25.9	- 53.4	- 9.4	- 0.51	1.02	- 0.17	- 31.9
Salers	2.1	- 15.4	- 28.0	8.1	- 0.18	0.55	- 0.086	- 18.5
Simmental	1.9	- 13.0	- 25.7	- 2.3	- 0.15	0.50	- 0.066	- 5.3
Tarentaise	2.2	29.2	- 6.5	9.9				

Source: US Meat Animal Research Center

Table 2: Example of using across-breed adjustment factors to convert noncomparable within-breed EPDs to comparable across-breed EPDs.

		BW	WW	YW	Milk	
Angus	AB -- Adj. Factors ¹	0	0	0	0	
	Bull #001	EPD ²	2.1	58	103	20
		AB-EPD ³	2.1	58	103	20
Simmental	AB -- Adj. Factors ¹	1.9	-13.0	-25.7	-2.3	
	Bull #002	EPD ²	1.2	65	115	22
		AB-EPD ³	3.1	52.0	89.3	19.7

¹ AB adj. factors are the across-breed adjustment factors from Table 1.

² EPDs are the within-breed EPD values from the breed's genetic evaluation for the bull of interest.

³ Across-breed EPDs after adjustment factors are applied to within-breed EPDs.



PICK OF THE ELITE DONOR PROSPECTS

After much consideration we decided to offer our customers something special to build a herd around. We have a pair of Gaucho heifers and a pair of Global heifers. We made the decision to choose these pairs because their EPDs and phenotypes were so impressive. We will offer both by each sire for bidding. The highest bidder gets the pick of the two and the others will remain here on the farm. The Gaucho and Global prospects have elite calving ease genetics paired with excellent EPDs.



Selling Pick of Lot #51A or Lot #51B, Baxley Family Farms will retain the heifer not chosen.

♀ LOT #51A

BFXM G19 EVERELDA L103

Black (Homozygous Black)

Polled (Homozygous Polled)

ASA#: 4366990 Tattoo: L103
DOB: 2023-11-23 5/8 SM 3/8 AN

Birth Actual	Adj. Weaning	Adj. Yearling
65	585	940

HOOK'S BEACON 56B HOOK'S EAGLE 6E
BFXM GAUCHO H4 BFXM EVERELDA G19
BFXM F75 BF X1204 EVERELDA E11

	CE	Brth	Wean	Year	ADG	MCE	Milk	MWW	Stay
EPD	17.3	-0.5	91.7	154.6	0.39	9.2	22.6	68.4	16.7
PC	±4.5	±1.6	±9.1	±14.1	±0.02	±6.2	±10.1	±9.1	±4.8
%	10	40	10	3	2	20	65	25	30

	Doc	CW	YG	Marb	BF	REA	SF	API	TI
EPD	12.6	70.4	-0.33	0.44	-0.046	1.44	-0.3	157.2	94.2
PC	±3.1	±12.0	±0.14	±0.16	±0.026	±0.28	±0.24		
%	50	1	20	40	45	1		15	10

♀ LOT #51B

BFXM G5 SATIN LADY L104

Black (Homozygous Black)

Polled (Homozygous Polled)

ASA#: 4366992 Tattoo: L104
DOB: 2023-11-23 5/8 SM 3/8 AN

Birth Actual	Adj. Weaning	Adj. Yearling
63	656	938

HOOK'S BEACON 56B HOOK'S EAGLE 6E
BFXM GAUCHO H4 BFXM SATIN LADY G5
BFXM F75 BF T1312 SATIN LADY E9

	CE	Brth	Wean	Year	ADG	MCE	Milk	MWW	Stay
EPD	17.8	-3.3	91.8	157.0	0.41	10.0	26.4	72.3	17.0
PC	±4.4	±1.6	±9.3	±14.1	±0.02	±6.2	±10.1	±9.1	±4.8
%	10	10	10	3	1	10	30	10	25

	Doc	CW	YG	Marb	BF	REA	SF	API	TI
EPD	14.3	40.7	-0.13	0.71	0.008	0.87	-0.3	178.1	104.2
PC	±3.1	±11.8	±0.14	±0.16	±0.026	±0.27	±0.24		
%	30	30	80	10	95	20		3	1

PICK OF THE ELITE DONOR PROSPECTS

After much consideration we decided to offer our customers something special to build a herd around. We have a pair of Gaucho heifers and a pair of Global heifers. We made the decision to choose these pairs because their EPDs and phenotypes were so impressive. We will offer both by each sire for bidding. The highest bidder gets the pick of the two and the others will remain here on the farm. The Gaucho and Global prospects have elite calving ease genetics paired with excellent EPDs.



Selling Pick of Lot #52A or Lot #52B, Baxley Family Farms will retain the heifer not chosen.

♀ LOT #52A

BFXM E7 SATIN LADY L16

Black (Homozygous Black)

Polled (Homozygous Polled)

ASA#: 4367011 Tattoo: L16
DOB: 2023-10-28 1/2 SM 1/2 AN

Birth Actual	Adj. Weaning	Adj. Yearling
61	611	886

WS PROCLAMATION E202 BASIN PAYWEIGHT 1682
KBHR GLOBAL J138 BF T1312 SATIN LADY E7
BAR CK MS X38 106Z CALLAWAYS PRIDE 1312

	CE	Brth	Wean	Year	ADG	MCE	Milk	MWW	Stay
EPD	19.6	-2.9	72.1	114.3	0.26	12.4	26.2	62.2	16.9
PC	±4.3	±1.6	±8.8	±13.6	±0.01	±6.1	±9.8	±8.8	±4.8
%	3	10	65	60	55	2	35	50	30

	Doc	CW	YG	Marb	BF	REA	SF	API	TI
EPD	13.9	32.4	0.0	1.08	0.017	0.45		188.4	99.6
PC	±3.0	±11.4	±0.14	±0.16	±0.026	±0.27	±0.24		
%	30	55	99	1	99	90		1	3

♀ LOT #52B

BFXM E8 SATIN LADY L22

Black (Homozygous Black)

Polled (Homozygous Polled)

ASA#: 4367008 Tattoo: L22
DOB: 2023-10-29 1/2 SM 1/2 AN

Birth Actual	Adj. Weaning	Adj. Yearling
66	624	904

WS PROCLAMATION E202 BASIN PAYWEIGHT 1682
KBHR GLOBAL J138 BF T1312 SATIN LADY E8
BAR CK MS X38 106Z CALLAWAYS PRIDE 1312

	CE	Brth	Wean	Year	ADG	MCE	Milk	MWW	Stay
EPD	15.8	-1.4	81.6	126.9	0.28	9.9	25.6	66.4	18.2
PC	±4.3	±1.6	±8.8	±13.6	±0.01	±6.1	±9.8	±8.8	±4.8
%	20	25	30	30	40	15	40	30	15

	Doc	CW	YG	Marb	BF	REA	SF	API	TI
EPD	16.8	49.2	0.09	0.68	0.013	0.34		163.9	92.3
PC	±3.0	±11.4	±0.13	±0.16	±0.026	±0.26			
%	10	15	99	15	99	95		10	15

SIM ANGUS HEIFERS

♀ LOT #53

BXFM J143 RITA L25

Black (Homozygous Black)

Polled (Homozygous Polled)

ASA#: 4367030 Tattoo: L25
DOB: 2023-11-1 3/8 SM 5/8 AN

Table with Birth Actual, Adj. Weaning, Adj. Yearling columns and values 54, 547, 824.

HOOK'S BEACON 56B BF PAID UP E20
BXFM GAUCHO H4 BF RITA J143
BXFM F75 BF 1529 RITA E17

Table with CE, Brth, Wean, Year, ADG, MCE, Milk, MWW, Stay columns.

Table with Doc, CW, YG, Marb, BF, REA, SF, API, TI columns.

♀ LOT #55

BXFM J109 PRIDE L66

Black (Homozygous Black)

Polled

ASA#: 4367035 Tattoo: L66
DOB: 2023-11-6 3/8 SM 5/8 AN

Table with Birth Actual, Adj. Weaning, Adj. Yearling columns and values 48, 563, 848.

HOOK'S BEACON 56B BF PAID UP E20
BXFM GAUCHO H4 BF J109
BXFM F75 BF A79

Table with CE, Brth, Wean, Year, ADG, MCE, Milk, MWW, Stay columns.

Table with Doc, CW, YG, Marb, BF, REA, SF, API, TI columns.

♀ LOT #57

BXFM G82 BLACKTOP L90

Black (Homozygous Black)

Polled (Homozygous Polled)

ASA#: 4366922 Tattoo: L90
DOB: 2023-11-15 5/8 SM 3/8 AN

Table with Birth Actual, Adj. Weaning, Adj. Yearling columns and values 68, 634, 1054.

HOOK'S BEACON 56B GIBBS 5822C NIT 1346Y
BXFM GAUCHO H4 BXFM G82
BXFM F75 BXFM C133

Large table with CE, Brth, Wean, Year, ADG, MCE, Milk, MWW, Stay, Doc, CW, YG, Marb, BF, REA, Shr, API, TI columns.

♀ LOT #54

BXFM E19 BLACKCAP L62

Black (Homozygous Black)

Polled (Homozygous Polled)

ASA#: 4367025 Tattoo: L62
DOB: 2023-11-5 5/8 SM 5/16 AN 1/16 CS

Table with Birth Actual, Adj. Weaning, Adj. Yearling columns and values 60, 633, 927.

HOOK'S BEACON 56B GIBBS 3393A STATEMENT
BXFM GAUCHO H4 BXFM E19
BXFM F75 BXFM B015

Table with CE, Brth, Wean, Year, ADG, MCE, Milk, MWW, Stay columns.

Table with Doc, CW, YG, Marb, BF, REA, SF, API, TI columns.

♀ LOT #56

BXFM J131 LOUISE L67

Black (Homozygous Black)

Polled (Homozygous Polled)

ASA#: 4366919 Tattoo: L67
DOB: 2023-11-6 3/8 SM 5/8 AN

Table with Birth Actual, Adj. Weaning, Adj. Yearling columns and values 65, 577, 731.

HOOK'S BEACON 56B GIBBS 6155D SUPER DUTY
BXFM GAUCHO H4 J131
BXFM F75 BXFM E51

Table with CE, Brth, Wean, Year, ADG, MCE, Milk, MWW, Stay columns.

Table with Doc, CW, YG, Marb, BF, REA, SF, API, TI columns.



♀ LOT #58

BXFM G70 MISS L131

Black (Homozygous Black)

Polled (Homozygous Polled)

ASA#: 4366916 Tattoo: L131
DOB: 2023-12-7 1/2 SM 1/4 AN 1/4 CS

Table with Birth Actual, Adj. Weaning, Adj. Yearling columns and values 61, 680, 963.

HOOK'S BEACON 56B TJ MAIN EVENT 503B
BXFM GAUCHO H4 BXFM G70
BXFM F75 T11

Table with CE, Brth, Wean, Year, ADG, MCE, Milk, MWW, Stay columns.

Table with Doc, CW, YG, Marb, BF, REA, SF, API, TI columns.

♀ LOT #60

BXFM M02

Black

Polled

ASA#: 4366950 Tattoo: M02
DOB: 2024-1-15 5/8 SM 5/16 AN 1/16 CS

Table with Birth Actual, Adj. Weaning columns and values 65, 655.

HOOK'S BEACON 56B GIBBS 2905Z MR CLEAN
BXFM GAUCHO H4 BXFM G105
BXFM F75 BXFM A105

Table with CE, Brth, Wean, Year, ADG, MCE, Milk, MWW, Stay columns.

Table with Doc, CW, YG, Marb, BF, REA, SF, API, TI columns.



Large table with CE, Brth, Wean, Year, ADG, MCE, Milk, MWW, Stay, Doc, CW, YG, Marb, BF, REA, SF, API, TI columns.

SIM ANGUS HEIFERS

♀ LOT #59

BXFM H07 BLACKCAP L135B

Black (Homozygous Black)

Polled (Homozygous Polled)

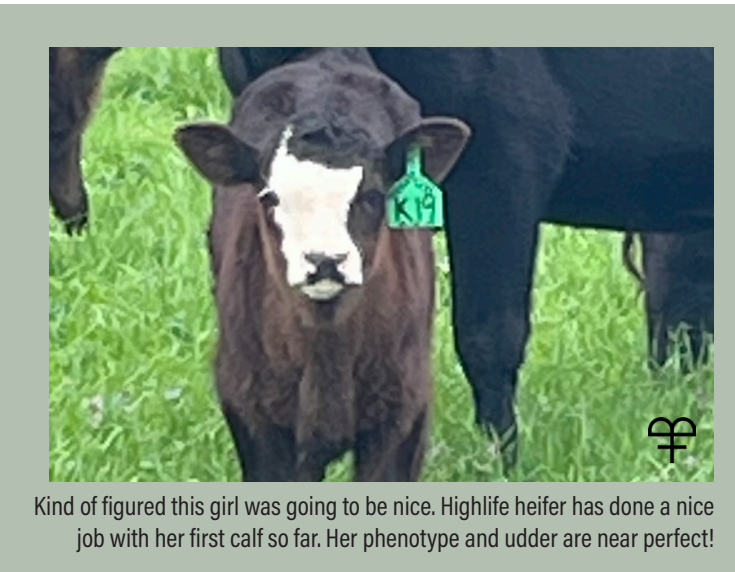
ASA#: 4366946 Tattoo: L135B
DOB: 2023-12-10 5/8 SM 3/8 AN

Table with Birth Actual, Adj. Weaning, Adj. Yearling columns and values 60, 633, 927.

HOOK'S BEACON 56B GIBBS 5822C NIT 1346Y
BXFM GAUCHO H4 BXFM H07
BXFM F75 BXFM C131

Table with CE, Brth, Wean, Year, ADG, MCE, Milk, MWW, Stay columns.

Table with Doc, CW, YG, Marb, BF, REA, SF, API, TI columns.



Kind of figured this girl was going to be nice. Highlife heifer has done a nice job with her first calf so far. Her phenotype and udder are near perfect!

SIRE GROUP // GLOBAL J138

LOT #61 ♀

BXFM A44 VIOLET L133B

Black (Homozygous Black)

Polled (Homozygous Polled)

ASA#: 4366959 Tattoo: L133B
DOB: 2023-12-9 3/4 SM 3/16 AN 1/16 CS

Table with Birth Actual, Adj. Weaning, Adj. Yearling columns and values 67, 584, 849.

WS PROCLAMATION E202 GIBBS 9212W HY WINYAH
KBHR GLOBAL J138 BXFM A44
BAR CK MS X38 106Z GIBBS S429 HY JER G003

SIRE GROUP // HONOR H060

♀ LOT #62

BXFM J47 LOUISE L5

Black (Homozygous Black)

Polled (Homozygous Polled)

ASA#: 4366951

Tattoo: L5

DOB: 2023-10-11

5/8 SM 9/32 AN 3/32 CS

HOOK'S BEACON 56B

GIBBS 6155D SUPER DUTY

KBHR HONOR H060

BXFM J47

WS MISS SUGAR C4

BXFM D51

	CE	Brth	Wean	Year	ADG	MCE	Milk	MWW	Stay
EPD	16.1	-1.8	74.1	110.8	0.23	10.0	24.7	61.6	17.9
PC	±4.3	±1.5	±8.8	±13.6	±0.01	±6.0	±9.9	±8.8	±4.8
%	15	20	60	65	75	10	45	55	20

	Doc	CW	YG	Marb	BF	REA	SF	API	TI
EPD	11.4	38.4	-0.15	0.42	-0.014	0.74	-0.38	148.0	82.7
PC	±2.9	±11.2	±0.13	±0.16	±0.026	±0.26			
%	65	35	75	45	85	40		30	45



♀ LOT #63

BXFM A3 ERICA L34

Black (Homozygous Black)

Polled (Homozygous Polled)

ASA#: 4366956

Tattoo: L34

DOB: 2023-11-2

5/8 SM 1/4 CS 1/8 AN

HOOK'S BEACON 56B

GIBBS 0612X HY BET 4P05

KBHR HONOR H060

BXFM A3

WS MISS SUGAR C4

U95

	CE	Brth	Wean	Year	ADG	MCE	Milk	MWW	Stay
EPD	12.0	0.5	79.8	121.4	0.26	7.0	23.5	63.3	17.2
PC	±4.3	±1.5	±9.0	±13.9	±0.02	±6.2	±9.9	±8.8	±4.9
%	60	60	35	45	55	50	55	45	25

	Doc	CW	YG	Marb	BF	REA	SF	API	TI
EPD	8.7	31.7	-0.32	0.59	-0.068	0.76	-0.29	150.5	88.1
PC	±3.0	±11.8	±0.14	±0.16	±0.026	±0.27			
%	90	55	25	20	20	40		25	25

♀ LOT #64

BXFM G77 BLACKCAP L42

Black (Homozygous Black)

Polled (Homozygous Polled)

ASA#: 4366925

Tattoo: L42

DOB: 2023-11-3

3/4 SM 5/32 CS 3/32 AN

HOOK'S BEACON 56B

GIBBS 5822C NIT 1346Y

KBHR HONOR H060

BXFM G77

WS MISS SUGAR C4

BXFM C32

	CE	Brth	Wean	Year	ADG	MCE	Milk	MWW	Stay
EPD	13.9	-1.0	76.0	106.7	0.19	8.4	28.4	66.4	16.8
PC	±4.4	±1.6	±8.8	±13.6	±0.01	±6.0	±9.8	±8.8	±4.8
%	35	35	50	75	95	30	20	30	30

	Doc	CW	YG	Marb	BF	REA	SF	API	TI
EPD	5.7	34.0	-0.32	0.29	-0.041	0.98	-0.38	134.7	80.1
PC	±3.0	±11.4	±0.13	±0.15	±0.025	±0.27			
%	99	50	25	65	45	10		50	55

♀ LOT #65

BXFM F91 EMULOUS L82

Black (Homozygous Black)

Polled (Homozygous Polled)

ASA#: 4366997

Tattoo: L82

DOB: 2023-11-13

3/4 SM 7/32 AN 1/32 CS

HOOK'S BEACON 56B

BXFM D21

KBHR HONOR H060

BXFM F91

WS MISS SUGAR C4

BXFM C84

	CE	Brth	Wean	Year	ADG	MCE	Milk	MWW	Stay
EPD	15.2	-0.3	74.7	113.0	0.24	9.3	26.3	63.6	19.7
PC	±4.2	±1.5	±8.8	±13.6	±0.01	±6.0	±9.8	±8.7	±4.7
%	25	45	55	60	70	20	30	45	10

	Doc	CW	YG	Marb	BF	REA	SF	API	TI
EPD	6.0	38.3	-0.35	0.54	-0.061	0.98	-0.37	155.8	85.3
PC	±3.0	±11.4	±0.13	±0.16	±0.026	±0.26			
%	99	35	15	25	20	10		20	35



Birth Actual	Adj. Weaning	Adj. Yearling
69	607	828

SIRE GROUP // CLRS HOMELAND 327H

LOT #66 ♀

BXFM H6 EMBLYNETTE L38

Black (Homozygous Black)

Polled (Homozygous Polled)

ASA#: 4366974

Tattoo: L38

DOB: 2023-11-3

5/8 SM 3/8 AN

REDHILL 672X X004 231A

TJ FRANCHISE 451D

CLRS HOMELAND 327H

BXFM H6

CLRS ALWAYS XCELLENT

BXFM F6

	CE	Brth	Wean	Year	ADG	MCE	Milk	MWW	Stay	Doc	CW	YG	Marb	BF	REA	SF	API	TI
EPD	10.2	2.8	90.8	135.3	0.28	5.4	24.2	69.5	15.4	11.9	39.9	-0.25	0.48	-0.036	0.9	-0.39	137.6	88.5
PC	±4.3	±1.5	±8.6	±13.4	±0.01	±5.9	±9.8	±8.7	±4.8	±2.9	±11.4	±0.13	±0.16	±0.026	±0.26			
%	80	95	10	20	40	75	50	20	45	60	30	45	35	55	20		45	25



Birth Actual	Adj. Weaning	Adj. Yearling
78	591	900

LOT #67 ♀

BXFM C99 MAX L44

Black (Homozygous Black)

Polled (Homozygous Polled)

ASA#: 4367021

Tattoo: L44

DOB: 2023-11-3

5/8 SM 1/4 AN 1/8 CS

REDHILL 672X X004 231A

GIBBS 1224Y SM G-FORCE

CLRS HOMELAND 327H

BXFM C99

CLRS ALWAYS XCELLENT

U77

	CE	Brth	Wean	Year	ADG	MCE	Milk	MWW	Stay	Doc	CW	YG	Marb	BF	REA	SF	API	TI
EPD	11.5	0.9	76.5	118.6	0.26	7.0	23.6	61.8	19.8	8.0	26.6	-0.25	0.41	-0.025	0.82	-0.35	143.1	80.9
PC	±4.4	±1.5	±8.8	±13.6	±0.01	±6.1	±9.8	±8.7	±4.9	±3.0	±12.0	±0.14	±0.15	±0.026	±0.28			
%	65	70	50	50	55	50	55	55	10	95	70	45	45	70	30		35	55



Birth Actual	Adj. Weaning	Adj. Yearling
80	642	846

LOT #68 ♀

BXFM G13 MISS OLIE L47

Black (Homozygous Black)

Polled (Homozygous Polled)

ASA#: 4366941

Tattoo: L47

DOB: 2023-11-3

1/2 SM 15/32 AN 1/32 CS

REDHILL 672X X004 231A

COLEMAN ENGAGE 5255

CLRS HOMELAND 327H

BXFM MISS OLIE G13

CLRS ALWAYS XCELLENT

BXFM E55

	CE	Brth	Wean	Year	ADG	MCE	Milk	MWW	Stay	Doc	CW	YG	Marb	BF	REA	SF	API	TI
EPD	11.7	-0.6	76.0	126.6	0.32	6.7	27.4	65.9	22.6	15.2	39.4	-0.29	0.46	-0.033	1.04		155.8	84.6
PC	±4.4	±1.5	±8.8	±13.6	±0.01	±5.8	±9.8	±8.7	±4.9	±2.9	±11.4	±0.14	±0.15	±0.026	±0.27			
%	65	40	50	35	20	55	25	35	1	20	30	30	35	55	10		20	40

SIRE GROUP // LCDR RESERVE 210J

♀ LOT #69

BXFM H3 ZAFIRAH L61

Black (*Homozygous Black*)

Polled (*Homozygous Polled*)

ASA#: 4366972 Tattoo: L61
DOB: 2023-11-5 3/4 SM 1/4 AN

Birth Actual	Adj. Weaning	Adj. Yearling
65	479	655

HHS MR ENTOURAGE 867B HOOK'S BEACON 56B
LCDR RESERVE 210J **BXFM H3**
LCDR MS ECHO 43E BXFM F34

	CE	Brth	Wean	Year	ADG	MCE	Milk	MWW	Stay
EPD	15.0	-2.3	66.5	104.5	0.24	10.5	19.3	52.9	18.7
PC	±4.2	±1.5	±8.5	±13.4	±0.01	±6.1	±9.9	±8.8	±4.7
%	25	15	85	80	70	10	85	90	15

	Doc	CW	YG	Marb	BF	REA	SF	API	TI
EPD	13.7	36.0	-0.23	0.66	-0.016	0.94	-0.32	160.8	84.9
PC	±2.9	±11.4	±0.13	±0.16	±0.026	±0.27			
%	35	40	50	15	85	15		15	40

Friends,

I have been in the livestock business all of my time on the farm. Connie spent time in the hog houses or working cattle with one or the other of our children on her hip.

We ran cattle commercially for years. While reviewing handwritten records in notebooks, we realized that the largest portion of our genetics traced back to Angus and Simmental Legends such as EXT, Traveler 6807, Legacy G151, Black Mick, 600U and Burns bull X399U. At this time, we made the decision to foundation register our herd and we started the long march forward with EPDs on the cattle. When reviewing pedigrees, if you happen to notice CS it represents Commercial Simmental and originated in our herd at this time in our history. As we moved forward, we put a lot of emphasis on the females with our selection of bulls. We have made it a point to review information on their dams and granddams. We continue to put a tremendous amount of emphasis on our females. We believe a great cow herd will help keep us all in the business through the ups and downs of the cattle cycles.

A huge part of our program is our belief in a superior maternal Angus base. Connie and I have worked diligently to build our current Angus herd. We focused early on to multiply and develop the females with the phenotype, docility, udder structure, fertility and carcass traits we thought would work very well in our environment. We found a few key females that we have built a herd around in the process. These females are uniform, fertile and they thrive here in the southeast. We will slowly build our numbers through careful selection. We will offer more Angus bulls as our sale continues to gain momentum.

We believe that the Angus genetics will be paramount in making first cross SimAngus bulls and females. We feel this program gives you, the cattle buyer, a very broad genetic base with lots of options. We will continue to "look down the road" as far as possible to help maximize your genetic possibilities. We will continue to remain on the path we have been on since the beginning. It is fairly easy to jump on the next hot ticket to stay up with the trend. The hard part is staying focused on the traits that keep cattle men and women in business. At Baxley Family Farms it will always be about the cow. You will continuously hear me talk about the "dam" of a particular bull or heifer. Great cows make great Bulls — If the cows are right, the bulls will be produced. This mindset has worked here and that part will not change.

Thank you for your interest in our cattle,

Connie

SIRE GROUP // KBHR GUNSMOKE J131

♀ LOT #70

BXFM Z7 EVERGREEN L76

Black (*Homozygous Black*)

Polled (*Homozygous Polled*)

ASA#: 4367010 Tattoo: L76
DOB: 2023-11-13 1/2 SM 1/2 AN

Birth Actual	Adj. Weaning	Adj. Yearling
76	544	779

LBR5 GENESIS G69 COLEMAN REGIS 904
KBHR GUNSMOKE J131 **BF 27**
KBHR E197 B F X1148

	CE	Brth	Wean	Year	ADG	MCE	Milk	MWW	Stay
EPD	12.7	-0.2	74.8	110.7	0.22	8.0	21.2	58.4	14.4
PC	±4.3	±1.5	±8.8	±13.6	±0.01	±6.1	±9.9	±9.0	±4.8
%	50	45	55	65	80	35	75	70	55

	Doc	CW	YG	Marb	BF	REA	SF	API	TI
EPD	9.1	36.0	-0.03	0.81	0.019	0.6		154.8	89.7
PC	±3.0	±11.8	±0.14	±0.16	±0.026	±0.26			
%	90	40	95	5	99	65		20	20

SIRE GROUP // MR SR HIGHLIFE G1609

♀ LOT #71

BXFM F2 MISS L121

Black (*Homozygous Black*)

Polled (*Homozygous Polled*)

ASA#: 4366979 Tattoo: L121
DOB: 2023-12-2 3/4 SM 1/4 AN

Birth Actual	Adj. Weaning	Adj. Yearling
70	516	788

KBHR HIGH ROAD E283 TJ MAIN EVENT 503B
MR SR HIGHLIFE G1609 **BXFM F2**
MISS SR D1609 BXFM D35

	CE	Brth	Wean	Year	ADG	MCE	Milk	MWW	Stay
EPD	15.3	-0.2	77.5	129.8	0.33	8.1	23.2	62.0	19.6
PC	±4.2	±1.5	±8.6	±13.4	±0.01	±5.8	±9.3	±8.3	±4.6
%	20	45	45	30	15	30	60	50	10

	Doc	CW	YG	Marb	BF	REA	SF	API	TI
EPD	8.2	34.9	-0.28	0.17	-0.069	0.67	-0.34	138.9	78.1
PC	±2.9	±11.2	±0.13	±0.15	±0.026	±0.25			
%	90	45	35	85	20	55		45	65



SIRE GROUP // LRS RARITY 983J

♀ LOT #72

BXFM F73 LILY L95

Black (*Homozygous Black*)

Polled (*Homozygous Polled*)

ASA#: 4367003 Tattoo: L95
DOB: 2023-11-18 1/2 SM 1/2 AN

Birth Actual	Adj. Weaning	Adj. Yearling
72	604	753

TEHAMA TAHOE B767 HOOK'S BROADWAY 11B
LRS RARITY 983J **BXFM MISS REGIS F73**
LRS MS EAGLE 983G BF Z7

	CE	Brth	Wean	Year	ADG	MCE	Milk	MWW	Stay
EPD	11.4	-1.2	84.7	133.4	0.3	6.0	22.3	65.1	12.8
PC	±4.4	±1.5	±8.8	±13.6	±0.01	±6.2	±10.0	±9.1	±4.9
%	70	30	20	20	30	65	65	35	70

	Doc	CW	YG	Marb	BF	REA	SF	API	TI
EPD	14.7	41.0	-0.16	0.4	-0.039	0.6		135.0	87.5
PC	±3.0	±11.6	±0.14	±0.16	±0.026	±0.27			
%	25	30	70	45	55	65		50	30

LOT #73 ♀

BXFM E41 MISS L98

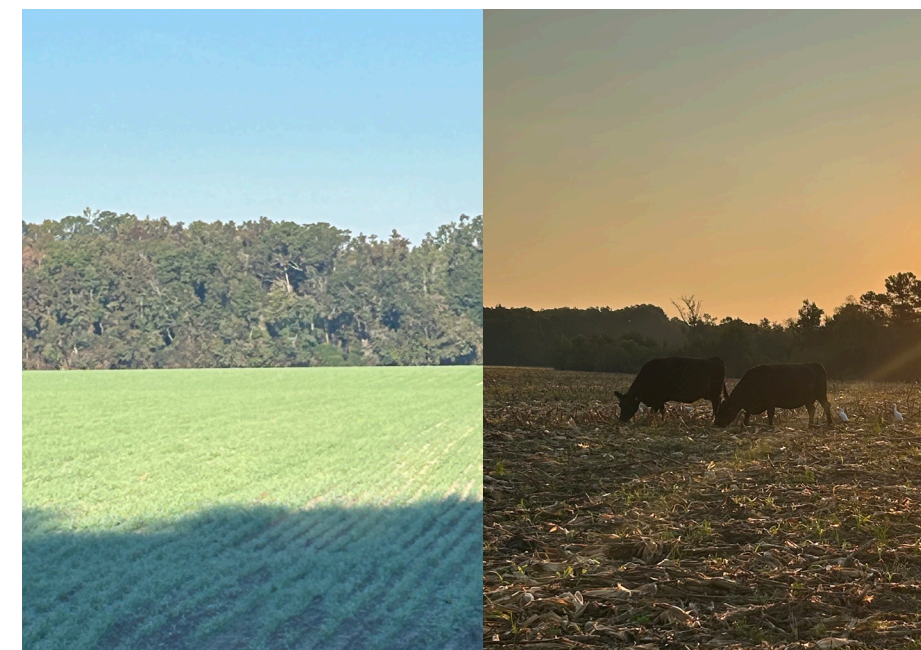
Black (*Homozygous Black*)

Polled (*Homozygous Polled*)

ASA#: 4367027 Tattoo: L98
DOB: 2023-11-19 5/8 SM 5/16 AN 1/16 CS

TEHAMA TAHOE B767 GW-WBF SUBSTANCE 820Y
LRS RARITY 983J **BXFM E41**
LRS MS EAGLE 983G BXFM C126

	CE	Brth	Wean	Year	ADG	MCE	Milk	MWW	Stay	Doc	CW	YG	Marb	BF	REA	SF	API	TI
EPD	11.3	2.8	101.2	161.7	0.38	5.1	26.8	78.0	16.7	16.4	67.1	-0.19	0.59	-0.051	0.92		153.7	98.4
PC	±4.4	±1.5	±8.8	±13.6	±0.01	±6.2	±10.0	±9.0	±4.8	±3.0	±11.6	±0.14	±0.16	±0.026	±0.27			
%	70	95	2	2	3	80	30	3	30	10	1	60	20	30	15		20	4



I guess folks have been running cattle on cornstalks for a long time. At every opportunity, we get the girls to graze cornfields. The thing we do a little different here, is giving the girls about 20 days to glean the fields and then we come in with our no-till drill and plant cereal rye. My observation over the years has been that the left over corn residue seems to help slow the lush rye foliage down a bit in our girls digestive tract. I've watched the cows have a mouth full of corn shucks while also grazing the rye. Kind of helps put some more fiber in the forage factory.

SIM ANGUS HEIFERS

♀ LOT #74

BXFM A4 ICE LADY L108
Black (*Heterozygous Black*)
Polled (*Homozygous Polled*)

Birth Actual	Adj. Weaning	Adj. Yearling
90	702	1048

ASA#: 4366957 Tattoo: L108
DOB: 2023-11-23 5/8 SM 3/8 AN

TEHAMA TAHOE B767

GIBBS 0612X HY BET 4P05

LRS RARITY 983J

BXFM A4

LRS MS EAGLE 983G

GIBBS 9216W SM ICE 5R43

	CE	Brth	Wean	Year	ADG	MCE	Milk	MWW	Stay
EPD	6.3	4.4	105.5	167.9	0.39	2.2	23.9	77.2	18.9
PC	±4.4	±1.5	±9.0	±13.6	±0.01	±6.3	±10.1	±9.1	±5.0
%	99	99	1	1	2	99	50	3	10

	Doc	CW	YG	Marb	BF	REA	SF	API	TI
EPD	11.3	71.4	-0.2	0.29	-0.049	1.02		133.6	90.3
PC	±3.0	±12.0	±0.14	±0.16	±0.027	±0.28			
%	65	1	60	65	45	10		50	20

♀ LOT #76

BXFM 6225D BLACKTOP L120
Black (*Homozygous Black*)
Polled (*Homozygous Polled*)

Birth Actual	Adj. Weaning	Adj. Yearling
71	619	835

ASA#: 4366994 Tattoo: L120
DOB: 2023-12-2 5/8 SM 3/8 AN

TEHAMA TAHOE B767

GIBBS 3393A STATEMENT

LRS RARITY 983J

BGIBBS 6225D JAUER 1Y03

LRS MS EAGLE 983G

PVF 1Y03 HY JAUER 9W26

	CE	Brth	Wean	Year	ADG	MCE	Milk	MWW	Stay
EPD	12.2	-2.0	75.3	113.4	0.24	6.1	22.9	61.1	15.7
PC	±4.4	±1.5	±8.8	±13.6	±0.01	±6.2	±10.0	±9.0	±5.0
%	60	20	55	60	70	65	60	55	40

	Doc	CW	YG	Marb	BF	REA	SF	API	TI
EPD	13.2	43.0	-0.22	0.58	-0.038	0.82	-0.13	148.7	87.3
PC	±3.0	±11.8	±0.14	±0.16	±0.027	±0.27			
%	40	25	50	20	55	30		30	30

There is lots of talk about Stay EPDs and FL EPDs within both Angus and Simmental Associations. They are supposedly to measure a cow's predicted ability to stay in the herd and continuously raise a calf every year. Nothing changes the profitability of a cow more than her consistent, trouble free, long term calf raising ability. That being said, we have an awful lot of "teenager cows" both Angus and Simmental still producing. If we do not give them a chance to see how long they will produce, how do we measure the trait? When we retain heifers, we fully expect them to fall into this category. We have too much time and money invested for them to fall out of production early in their lives.



♀ LOT #75

BXFM D48 SWEETIE L114
Black (*Homozygous Black*)
Polled (*Homozygous Polled*)

Birth Actual	Adj. Weaning	Adj. Yearling
70	601	972

ASA#: 4367031 Tattoo: L114
DOB: 2023-11-26 3/4 SM 1/4 AN

TEHAMA TAHOE B767

GIBBS 0601X RAISINCAIN

LRS RARITY 983J

BXFM D48

LRS MS EAGLE 983G

BXFM A22

	CE	Brth	Wean	Year	ADG	MCE	Milk	MWW	Stay
EPD	14.5	-0.9	84.3	133.7	0.31	7.2	23.1	65.9	16.1
PC	±4.4	±1.5	±8.8	±13.6	±0.01	±6.2	±10.0	±9.0	±4.8
%	30	35	25	20	25	45	60	35	35

	Doc	CW	YG	Marb	BF	REA	SF	API	TI
EPD	12.1	37.1	-0.33	0.2	-0.061	0.92		135.5	83.6
PC	±3.0	±11.6	±0.14	±0.16	±0.027	±0.27			
%	55	40	20	80	20	15		50	40

♀ LOT #77

BXFM E89 BLACKCAP L136
Black (*Homozygous Black*)
Polled (*Homozygous Polled*)

Birth Actual	Adj. Weaning	Adj. Yearling
73	626	957

ASA#: 4367020 Tattoo: L136
DOB: 2023-12-12 1/2 SM 3/8 AN 1/8 CS

TEHAMA TAHOE B767

GIBBS 3393A STATEMENT

LRS RARITY 983J

BXFM D89

LRS MS EAGLE 983G

BXFM A3

	CE	Brth	Wean	Year	ADG	MCE	Milk	MWW	Stay
EPD	12.3	1.2	90.4	144.6	0.34	6.2	22.6	68.3	17.7
PC	±4.4	±1.5	±9.0	±13.9	±0.02	±6.4	±10.2	±9.2	±5.0
%	55	75	10	10	10	65	65	25	20

	Doc	CW	YG	Marb	BF	REA	SF	API	TI
EPD	15.0	54.5	-0.22	0.38	-0.074	0.68		143.7	88.2
PC	±3.0	±11.8	±0.14	±0.16	±0.027	±0.27			
%	20	10	50	50	10	50		35	25

SIM ANGUS HEIFERS // COMMERCIAL HEIFERS

SIRE GROUP // TJ STONE COLD 336G



Birth Actual	Adj. Weaning	Adj. Yearling
60	575	918

LOT #78 ♀

BXFM H18 MARKIE L110
Black (*Homozygous Black*)
Polled (*Homozygous Polled*)

ASA#: 4381257 Tattoo: L110
DOB: 2023-11-24 3/8 SM 1/2 CS 1/8 AN

TJ FROSTY 318E ---
TJ STONE COLD 336G H18 ---
TJ 11D ---

	CE	Brth	Wean	Year	ADG	MCE	Milk	MWW	Stay	Doc	CW	YG	Marb	BF	REA	SF	API	TI
EPD	17.8	-1.7	84.7	139.5	0.34	11.3	26.1	68.4	10.0	15.1	33.3	-0.19	0.47	-0.037	0.61		144.1	91.8
PC	±4.6	±1.7	±9.5	±14.6	±0.02	±6.5	±10.6	±9.7	±5.0	±3.1	±12.4	±0.14	±0.17	±0.028	±0.28			
%	10	25	20	15	10	4	35	25	90	20	50	60	35	55	65		35	15



Birth Actual	Adj. Weaning	Adj. Yearling
63	591	890

LOT #79 ♀

BXFM H105 PRIDE L127
Black (*Homozygous Black*)
Polled (*Homozygous Polled*)

ASA#: 4366936 Tattoo: L127
DOB: 2023-12-5 1/2 SM 1/2 AN

TJ FROSTY 318E
TJ STONE COLD 336G
TJ 11D
BXFM COOL DUDE F17
BXFM E87 PRIDE H105
BF 154 PRIDE E87

	CE	Brth	Wean	Year	ADG	MCE	Milk	MWW	Stay	Doc	CW	YG	Marb	BF	REA	SF	API	TI
EPD	16.3	-1.0	84.4	146.3	0.39	9.3	28.7	70.9	15.9	16.8	46.2	-0.09	0.54	-0.005	0.71	-0.21	156.9	92.5
PC	±4.4	±1.5	±9.0	±13.9	±0.02	±6.1	±9.6	±8.7	±4.8	±3.0	±11.6	±0.14	±0.16	±0.026	±0.27			
%	15	35	25	10	2	20	15	15	40	10	20	85	25	90	45		15	15

♀ LOT #80

BXFM STONE M04

Birth Actual	Adj. Weaning
68	626

Black
Polled (*Homozygous Polled*)
ASA#: 4366975 Tattoo: M04
DOB: 2024-1-20 5/8 SM 7/32 AN 5/32 CS

TJ FROSTY 318E KOCH BIG TIMBER 685D
TJ STONE COLD 336G BXFM SALLY F25
TJ 11D BXFM D54

	CE	Brth	Wean	Year	ADG	MCE	Milk	MWW	Stay
EPD	12.6	0.9	92.0	142.7	0.32	7.3	25.1	71.1	12.3
PC	±5.8	±2.0	±12.2	±19.3	±0.02	±6.6	±10.2	±9.9	±6.0
%	50	70	10	10	20	45	40	15	75

	Doc	CW	YG	Marb	BF	REA	SF	API	TI
EPD	14.6	44.4	-0.14	0.46	-0.035	0.63	-0.28	137.6	91.2
PC	±4.1	±15.8	±0.17	±0.2	±0.032	±0.35			
%	25	20	75	35	55	60		45	20

♀ LOT #81

BXFM J7 LUCY L27
Black (*Homozygous Black*)
Polled (*Homozygous Polled*)

ASA#: 4367041 Tattoo: L27
DOB: 2023-11-2 3/8 SM 5/8 AN

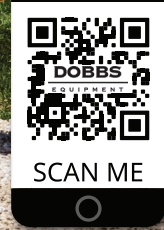
♀ LOT #82

BXFM D38 FOXY LADY L144
Black (*Homozygous Black*)
Polled (*Homozygous Polled*)

ASA#: 4381260 Tattoo: L144
DOB: 2023-12-31 1/2 SM 1/4 AN 1/4 CS

NEVER FALL BEHIND

Offering the support your need that stay ahead so that you never fall behind. Parts on the ready let you plan for downtime or avoid it all together. Visit any of our six (6) store locations in South Carolina for all your genuine John Deere parts and service needs.



MORRIS CROP INSURANCE, LLC

BILLY (843) 992-0059

LEE (843) 325-4700



THANK YOU TO THE FOLLOWING SPONSORS:





Baxley Family Farms, LLC
4490 Rose Hill Rd.
Georgetown, SC 29440

